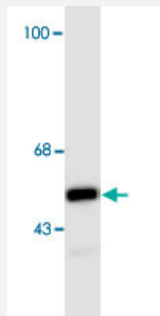


Mitochondria monoclonal antibody, clone 113-1

Catalog # MAB8177

Size 100 uL

Applications



Western Blot (Cell lysate)

Western blot of HeLa lysate showing specific immunolabeling of the ~ 60k mitochondrial protein.

Specification

Product Description	Mouse monoclonal antibody raised against native Mitochondria.
Immunogen	Native purified from human cell homogenate.
Host	Mouse
Theoretical MW (kDa)	60
Reactivity	Human
Specificity	This antibody has been directly tested for reactivity in human tissue. It does not react with mouse or rat mitochondria. specific to human mitochondria in all cell types. This antibody works on acetone fixed and 2% paraformaldehyde fixed cells. This antibody also works for immunohistochemistry on 2% paraformaldehyde fixed (5-10 minutes) cryostat sections.
Form	Liquid
Isotype	IgG1
Recommend Usage	Western Blot (1:1000) Immunofluorescence (1:800) Immunohistochemistry (1:800) The optimal working dilution should be determined by the end user.

Storage Buffer

In PBS

Storage Instruction

Store at -20°C.

Aliquot to avoid repeated freezing and thawing.

Applications

- Western Blot (Cell lysate)

Western blot of HeLa lysate showing specific immunolabeling of the ~ 60k mitochondrial protein.

- Immunohistochemistry

- Immunofluorescence

Publication Reference

- [Mitochondria: more than just a powerhouse.](#)

McBride HM, Neuspiel M, Wasiak S.

Current Biology 2006 Jul; 16(14):R551.

- [Apoptotic pathways: the roads to ruin.](#)

Green DR.

Cell 1998 Sep; 94(6):695.