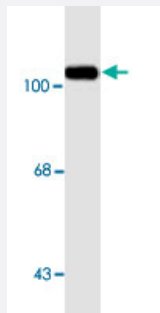


Gria1 monoclonal antibody, clone RH95

Catalog # MAB8176 Size 100 uL

Applications



Western Blot (Tissue lysate)

Western blot of rat hippocampal lysate showing specific immunolabeling of the ~ 105k Gria1 protein.

Specification

Product Description	Mouse monoclonal antibody raised against synthetic peptide of Gria1.
Immunogen	A synthetic peptide corresponding to N-terminus of rat Gria1.
Host	Mouse
Theoretical MW (kDa)	100
Reactivity	Mouse, Rat
Specificity	This antibody has been directly tested for reactivity in Western blots with mouse and rat tissue. specific to the ~105k GluR1 protein.
Form	Liquid
Purification	Protein G purification
Isotype	IgG
Recommend Usage	Western Blot (1:1000) The optimal working dilution should be determined by the end user.
Storage Buffer	In 10 mM HEPES, 150 mM NaCl, pH 7.5 (50% glycerol, 0.1 mg/mL BSA)

Storage Instruction

Store at -20°C.
Aliquot to avoid repeated freezing and thawing.

Applications

- Western Blot (Tissue lysate)

Western blot of rat hippocampal lysate showing specific immunolabeling of the ~ 105k Gria1 protein.

Gene Info — Gria1

Entrez GeneID	50592
Protein Accession#	P19490
Gene Name	Gria1
Gene Alias	gluR-A
Gene Description	glutamate receptor, ionotropic, AMPA 1
Gene Ontology	Hyperlink
Gene Summary	ionotropic
Other Designations	glutamate receptor A glutamate receptor subunit GluR1 glutamate receptor, ionotropic, AMPA1 (alpha 1)

Publication Reference

- [Requirement of AMPA receptor GluR2 phosphorylation for cerebellar long-term depression.](#)

Chung HJ, Steinberg JP, Huganir RL, Linden DJ.
Science 2003 Jun; 300(5626):1751.

Application: WB-Tr, Human, HEK 293T cells

- [Cloned glutamate receptors.](#)

Hollmann M, Heinemann S.
Annual Review of Neuroscience 1994 Jan; 17:31.

Application: Flow Cyt, IHC, WB, Human, Mouse, Rat, Brains, Mammalian cells

- [A family of AMPA-selective glutamate receptors.](#)

Keinanen K, Wisden W, Sommer B, Werner P, Herb A, Verdoorn TA, Sakmann B, Seeburg PH.

Science 1990 Aug; 249(4968):556.