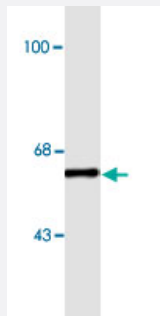


COBRA1 monoclonal antibody, clone F7E4

Catalog # MAB8174

Size 100 uL

Applications



Western Blot (Tissue lysate)

Western blot of neonatal rat brain lysate showing specific immunolabeling of the ~ 62K COBRA1 protein.

Specification

Product Description	Mouse monoclonal antibody raised against full length recombinant COBRA1.
Immunogen	Recombinant protein corresponding to full length human COBRA1.
Host	Mouse
Theoretical MW (kDa)	62
Reactivity	Human, Mouse, Rat
Specificity	This antibody has been directly tested for reactivity in Western blots with human, mouse and rat tissue. specific to the ~62k COBRA1 protein in Western blots of neonatal rat brain lysate.
Form	Liquid
Purification	Protein G purification
Isotype	IgG1
Recommend Usage	Western Blot (1:1000) The optimal working dilution should be determined by the end user.
Storage Buffer	In PBS (0.05% sodium azide)

Storage Instruction

Store at -20°C.
Aliquot to avoid repeated freezing and thawing.

Note

This product contains sodium azide: a POISONOUS AND HAZARDOUS SUBSTANCE which should be handled by trained staff only.

Applications

- Western Blot (Tissue lysate)

Western blot of neonatal rat brain lysate showing specific immunolabeling of the ~ 62K COBRA1 protein.

Gene Info — COBRA1

Entrez GeneID[25920](#)**Protein Accession#**[Q8WX92](#)**Gene Name**

COBRA1

Gene Alias

DKFZp586B0519, KIAA1182, NELF-B, NELFB

Gene Description

cofactor of BRCA1

Gene Ontology[Hyperlink](#)**Gene Summary**

NELFB is a subunit of negative elongation factor (NELF), which also includes NELFA (WHSC2; MIM 606026), either NELFC or NELFD (TH1L; MIM 605297), and NELFE (RDBP; MIM 154040). NELF acts with DRB sensitivity-inducing factor (DSIF), a heterodimer of SPT4 (SUPT4H1; MIM 603555) and SPT5 (SUPT5H; MIM 602102), to cause transcriptional pausing of RNA polymerase I (see MIM 180660) (Narita et al., 2003 [PubMed 12612062]).[supplied by OMIM]

Other Designations

negative elongation factor protein B

Publication Reference

- [COBRA1 inhibits AP-1 transcriptional activity in transfected cells.](#)

Zhong H, Zhu J, Zhang H, Ding L, Sun Y, Huang C, Ye Q.

Biochemical and Biophysical Research Communications 2004 Dec; 325(2):568.

Application: WB-Tr, Human, MCF-7 cells

- [Attenuation of estrogen receptor alpha-mediated transcription through estrogen-stimulated recruitment of a negative elongation factor.](#)

Aiyar SE, Sun JL, Blair AL, Moskaluk CA, Lu YZ, Ye QN, Yamaguchi Y, Mukherjee A, Ren DM, Handa H, Li R.

Genes & Development 2004 Sep; 18(17):2134.

Application: ChIP, IHC-P, WB, Human, Human mammary gland, MCF-7, T47D cells