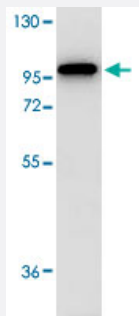


# Stat2 monoclonal antibody, clone 19G8.H2.H6

Catalog # MAB8168

Size 100 ug

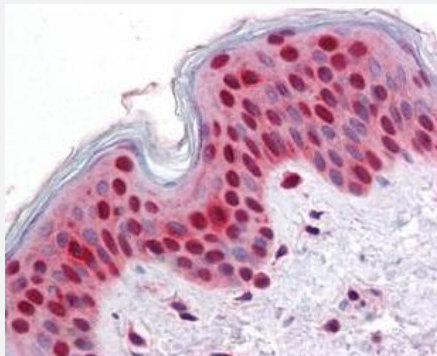
## Applications



### Western Blot (Cell lysate)

Western Blot from HeLa whole cell lysate was loaded at 1 ug. The blot was blocked with 1% BSA in TBST for 30 min at RT, then washed and incubated with Stat2 monoclonal antibody, clone 19G8.H2.H6 (Cat # MAB8168) in 3% BSA/TBST at 1 : 1,000 overnight at 4C. After washing, blot was incubated with Rockland Immunochemicals' HRP Rb a-Ms IgG antibody in blocking buffer for 30 minutes at RT. Data was collected using Bio-Rad VersaDoc® 4000 MP.

### Immunohistochemistry (Formalin/PFA-fixed paraffin-embedded sections)



Immunohistochemical staining of Stat2 monoclonal antibody, clone 19G8.H2.H6 (Cat # MAB8168) was used at a 2.5 ug/mL to detect Stat2 in squamous epithelium from human skin (40X) showing moderate to strong nuclear and faint to moderate cytoplasmic staining (image). Expression of STAT2 is expected to be cytoplasmic, and nuclear upon activation. The image shows the localization of the antibody as the precipitated red signal, with a hematoxylin purple nuclear counterstain. Tissue was formalin-fixed and paraffin embedded. Personal Communication, Vasiliki Demas, LifeSpan Biosciences, Seattle, WA.

## Specification

Product Description	Mouse monoclonal antibody raised against synthetic peptide of Stat2.
Immunogen	A synthetic peptide corresponding to C-terminus of mouse Stat2.
Host	Mouse
Reactivity	Human, Mouse

<b>Form</b>	Liquid
<b>Recommend Usage</b>	ELISA (1:5000-1:10000) Western Blot (1:1000) Immunohistochemistry (2.5 ug/mL) The optimal working dilution should be determined by the end user.
<b>Storage Buffer</b>	In 20 mM KH <sub>2</sub> PO <sub>4</sub> , 150 mM NaCl, pH 7.2 (0.01% sodium azide)
<b>Storage Instruction</b>	Store at 4°C. For long term storage store at -20°C. Aliquot to avoid repeated freezing and thawing.
<b>Note</b>	This product contains sodium azide: a POISONOUS AND HAZARDOUS SUBSTANCE which should be handled by trained staff only.

## Applications

- Western Blot (Cell lysate)

Western Blot from HeLa whole cell lysate was loaded at 1 ug. The blot was blocked with 1% BSA in TBST for 30 min at RT, then washed and incubated with Stat2 monoclonal antibody, clone 19G8.H2.H6 (Cat # MAB8168) in 3% BSA/TBST at 1 : 1,000 overnight at 4C. After washing, blot was incubated with Rockland Immunochemicals' HRP Rb a-Ms IgG antibody in blocking buffer for 30 minutes at RT. Data was collected using Bio-Rad VersaDoc® 4000 MP.

- Immunohistochemistry (Formalin/PFA-fixed paraffin-embedded sections)

Immunohistochemical staining of Stat2 monoclonal antibody, clone 19G8.H2.H6 (Cat # MAB8168) was used at a 2.5 ug/mL to detect Stat2 in squamous epithelium from human skin (40X) showing moderate to strong nuclear and faint to moderate cytoplasmic staining (image). Expression of STAT2 is expected to be cytoplasmic, and nuclear upon activation. The image shows the localization of the antibody as the precipitated red signal, with a hematoxylin purple nuclear counterstain. Tissue was formalin-fixed and paraffin embedded. Personal Communication, Vasiliki Demas, LifeSpan Biosciences, Seattle, WA.

- Enzyme-linked Immunoabsorbent Assay

## Gene Info — Stat2

<b>Entrez GeneID</b>	<a href="#">20847</a>
<b>Gene Name</b>	Stat2
<b>Gene Alias</b>	1600010G07Rik, AW496480
<b>Gene Description</b>	signal transducer and activator of transcription 2
<b>Gene Ontology</b>	<a href="#">Hyperlink</a>
<b>Other Designations</b>	-

## Publication Reference

- [Functional subdomains of STAT2 required for preassociation with the alpha interferon receptor and for signaling.](#)

Li X, Leung S, Kerr IM, Stark GR.

Molecular and Cellular Biology 1997 Apr; 17(4):2048.

Application: WB-Tr, Human, U6A cells