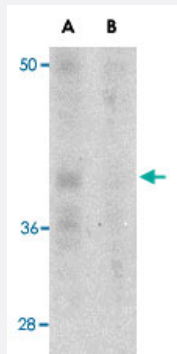


Pdc1 monoclonal antibody, clone 7A11B1

Catalog # MAB8088

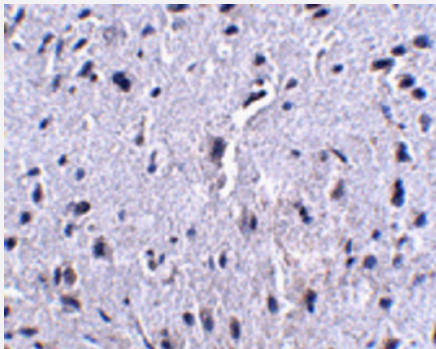
Size 100 ug

Applications



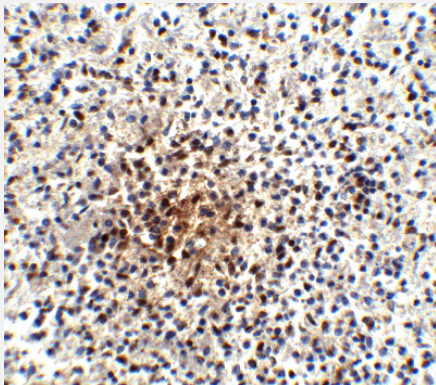
Western Blot (Cell lysate)

Western blot analysis of Pdc1 in A-20 cell lysate with Pdc1 monoclonal antibody, clone 7A11B1 (Cat # MAB8088) at 1 ug/mL in the (A) absence and (B) presence of blocking recombinant protein.



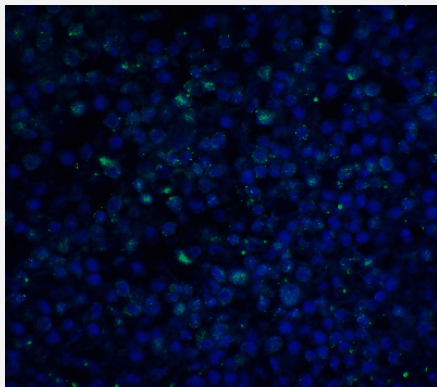
Immunohistochemistry

Immunohistochemical staining of mouse brain tissue with Pdc1 monoclonal antibody, clone 7A11B1 (Cat # MAB8088) at 2.5 ug/mL.



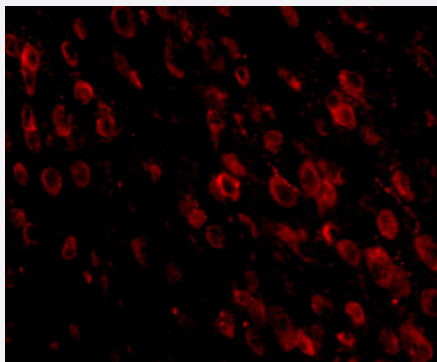
Immunohistochemistry

Immunohistochemical staining of human spleen tissue with Pdc1 monoclonal antibody, clone 7A11B1 (Cat # MAB8088) at 25 ug/mL.



Immunofluorescence

Immunofluorescent staining of human spleen tissue with Pdc1 monoclonal antibody, clone 7A11B1 (Cat # MAB8088) at 20 ug/mL.



Immunofluorescence

Immunofluorescent staining of mouse brain tissue with Pdc1 monoclonal antibody, clone 7A11B1 (Cat # MAB8088) at 20 ug/mL.

Specification

Product Description	Mouse monoclonal antibody raised against partial recombinant Pdc1.
Immunogen	Recombinant protein corresponding to ~150 amino acids at the N-terminus of mouse Pdc1.
Host	Mouse
Reactivity	Human, Mouse
Form	Liquid
Purification	Immunoaffinity chromatography
Isotype	IgG1
Recommend Usage	ELISA Immunofluorescence (20 ug/mL) Immunohistochemistry (Formalin/PFA-fixed paraffin-embedded sections) (2.5 ug/mL) Western Blot (1 ug/mL) The optimal working dilution should be determined by the end user.
Storage Buffer	In PBS (0.02% sodium azide)

Storage Instruction

Store at -20°C.
Aliquot to avoid repeated freezing and thawing.

Note

This product contains sodium azide: a POISONOUS AND HAZARDOUS SUBSTANCE which should be handled by trained staff only.

Applications

- Western Blot (Cell lysate)

Western blot analysis of Pdcd1 in A-20 cell lysate with Pdcd1 monoclonal antibody, clone 7A11B1 (Cat # MAB8088) at 1 ug/mL in the (A) absence and (B) presence of blocking recombinant protein.

- Immunohistochemistry

Immunohistochemical staining of mouse brain tissue with Pdcd1 monoclonal antibody, clone 7A11B1 (Cat # MAB8088) at 2.5 ug/mL.

- Immunohistochemistry

Immunohistochemical staining of human spleen tissue with Pdcd1 monoclonal antibody, clone 7A11B1 (Cat # MAB8088) at 25 ug/mL.

- Immunofluorescence

Immunofluorescent staining of human spleen tissue with Pdcd1 monoclonal antibody, clone 7A11B1 (Cat # MAB8088) at 20 ug/mL.

- Immunofluorescence

Immunofluorescent staining of mouse brain tissue with Pdcd1 monoclonal antibody, clone 7A11B1 (Cat # MAB8088) at 20 ug/mL.

- Enzyme-linked Immunoabsorbent Assay

Gene Info — Pdcd1

Entrez GeneID[18566](#)**Gene Name**

Pdcd1

Gene Alias

Ly101, PD-1, Pdc1

Gene Description

programmed cell death 1

Gene Ontology[Hyperlink](#)

Other Designations

-