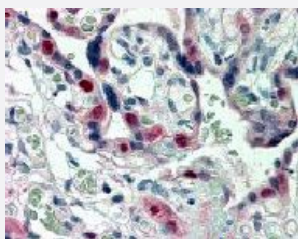


# CDK2 monoclonal antibody

Catalog # MAB8066

Size 50 ug

## Applications



### Immunohistochemistry (Formalin/PFA-fixed paraffin-embedded sections)

Immunohistochemistry (Formalin/PFA-fixed paraffin-embedded sections) staining in human placenta with CDK2 monoclonal antibody (Cat # MAB8066).

## Specification

<b>Product Description</b>	Mouse monoclonal antibody raised against recombinant CDK2.
<b>Immunogen</b>	Recombinant protein corresponding to human CDK2.
<b>Host</b>	Mouse
<b>Reactivity</b>	Frog, Human, Mouse
<b>Form</b>	Liquid
<b>Isotype</b>	IgG
<b>Recommend Usage</b>	Immunohistochemistry (Formalin/PFA-fixed paraffin-embedded sections) (5 ug/mL) The optimal working dilution should be determined by the end user.
<b>Storage Buffer</b>	In 100 mM Tris-glycine, 150 mM NaCl, pH 7.4 (0.05% sodium azide)
<b>Storage Instruction</b>	Store at 4°C for three months. For long term storage store at -20°C. Aliquot to avoid repeated freezing and thawing.
<b>Note</b>	This product contains sodium azide: a POISONOUS AND HAZARDOUS SUBSTANCE which should be handled by trained staff only.

## Applications

- Western Blot
- Immunohistochemistry (Formalin/PFA-fixed paraffin-embedded sections)

Immunohistochemistry (Formalin/PFA-fixed paraffin-embedded sections) staining in human placenta with CDK2 monoclonal antibody (Cat # MAB8066).

- Immunoprecipitation
- Enzyme-linked Immunoabsorbent Assay

## Gene Info — CDK2

Entrez GeneID [1017](#)

Gene Name CDK2

Gene Alias p33(CDK2)

Gene Description cyclin-dependent kinase 2

Omim ID [116953](#)

Gene Ontology [Hyperlink](#)

**Gene Summary** The protein encoded by this gene is a member of the Ser/Thr protein kinase family. This protein kinase is highly similar to the gene products of *S. cerevisiae* cdc28, and *S. pombe* cdc2. It is a catalytic subunit of the cyclin-dependent protein kinase complex, whose activity is restricted to the G1-S phase, and essential for cell cycle G1/S phase transition. This protein associates with and regulated by the regulatory subunits of the complex including cyclin A or E, CDK inhibitor p21Cip1 (CDKN1A) and p27Kip1 (CDKN1B). Its activity is also regulated by its protein phosphorylation. Two alternatively spliced variants and multiple transcription initiation sites of this gene have been reported. [provided by RefSeq]

**Other Designations** cdc2-related protein kinase|cell division kinase 2|p33 protein kinase

## Pathway

- [Cell cycle](#)
- [p53 signaling pathway](#)

- [Pathways in cancer](#)
- [Prostate cancer](#)
- [Small cell lung cancer](#)

## Disease

- [Azoospermia](#)
- [Breast cancer](#)
- [Breast Neoplasms](#)
- [Chromosome Aberrations](#)
- [Diabetes Mellitus](#)
- [Genetic Predisposition to Disease](#)
- [Kidney Failure](#)
- [Lymphoma](#)
- [Neoplasm Invasiveness](#)
- [Ovarian cancer](#)
- [Ovarian Neoplasms](#)