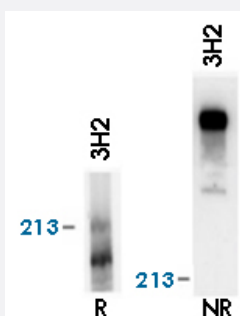


LAMA4 monoclonal antibody, clone 3H2

Catalog # MAB7869

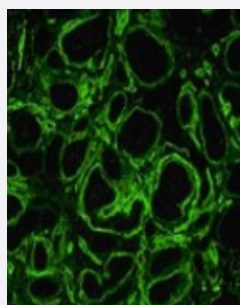
Size 100 ug

Applications



Western Blot (Cell lysate)

Reactivity of LAMA4 monoclonal antibody, clone 3H2 (Cat # MAB7869) on human platelet lysate by western blotting (reducing, R and nonreducing, NR conditions).



Immunofluorescence

Immunofluorescence staining on human embryonic kidney with LAMA4 monoclonal antibody, clone 3H2 (Cat # MAB7869).

Specification

Product Description	Mouse monoclonal antibody raised against native LAMA4.
Immunogen	Immunoaffinity-purified Laminin 411 (laminin-8 (alpha4beta1gamma1) from platelets.
Host	Mouse
Reactivity	Human
Form	Liquid
Purification	Protein G purification
Isotype	IgG1

Recommend Usage	ELISA (0.02 ug/mL) Western Blot (0.5-1 ug/mL) Immunofluorescence Immunohistochemistry (5-10 ug/mL) Immunoprecipitation (0.5 ug/mL) The optimal working dilution should be determined by the end user.
Storage Buffer	In PBS, pH 7.4 (0.09% sodium azide)
Storage Instruction	Store at -20°C. For long term storage store at -80°C. Aliquot to avoid repeated freezing and thawing.
Note	This product contains sodium azide: a POISONOUS AND HAZARDOUS SUBSTANCE which should be handled by trained staff only.

Applications

- Western Blot (Cell lysate)

Reactivity of LAMA4 monoclonal antibody, clone 3H2 (Cat # MAB7869) on human platelet lysate by western blotting (reducing, R and nonreducing, NR conditions).

- Immunohistochemistry

- Immunofluorescence

Immunofluorescence staining on human embryonic kidney with LAMA4 monoclonal antibody, clone 3H2 (Cat # MAB7869).

- Immunoprecipitation

- Enzyme-linked Immunoabsorbent Assay

Gene Info — LAMA4

Entrez GeneID	3910
Gene Name	LAMA4
Gene Alias	DKFZp686D23145, LAMA3, LAMA4*-1
Gene Description	laminin, alpha 4
Omim ID	600133
Gene Ontology	Hyperlink

Gene Summary

Laminins, a family of extracellular matrix glycoproteins, are the major noncollagenous constituent of basement membranes. They have been implicated in a wide variety of biological processes including cell adhesion, differentiation, migration, signaling, neurite outgrowth and metastasis. Laminins are composed of 3 non identical chains: laminin alpha, beta and gamma (formerly A, B1, and B2, respectively) and they form a cruciform structure consisting of 3 short arms, each formed by a different chain, and a long arm composed of all 3 chains. Each laminin chain is a multidomain protein encoded by a distinct gene. Several isoforms of each chain have been described. Different alpha, beta and gamma chain isomers combine to give rise to different heterotrimeric laminin isoforms which are designated by Arabic numerals in the order of their discovery, i.e. alpha1beta1gamma1 heterotrimer is laminin 1. The biological functions of the different chains and trimer molecules are largely unknown, but some of the chains have been shown to differ with respect to their tissue distribution, presumably reflecting diverse functions in vivo. This gene encodes the alpha chain isoform laminin, alpha 4. The domain structure of alpha 4 is similar to that of alpha 3, both of which resemble truncated versions of alpha 1 and alpha 2, in that approximately 1,200 residues at the N-terminus (domains IV, V and VI) have been lost. Laminin, alpha 4 contains the C-terminal G domain which distinguishes all alpha chains from the beta and gamma chains. The RNA analysis from adult and fetal tissues revealed developmental regulation of expression, however, the exact function of laminin, alpha 4 is not known. Tissue-specific utilization of alternative polyA-signal has been described in literature. Alternative splicing results in multiple transcript variants encoding distinct isoforms. [provided by RefSeq]

Other Designations

OTTHUMP00000017039|OTTHUMP00000017043|laminin alpha 4 chain

Publication Reference

- [Laminin isoforms and their integrin receptors in glioma cell migration and invasiveness: Evidence for a role of alpha5-laminin\(s\) and alpha3beta1 integrin.](#)

Kawataki T, Yamane T, Naganuma H, Rousselle P, Anduren I, Tryggvason K, Patarroyo M.

Experimental Cell Research 2007 Nov; 313(18):3819.

Application: IHC-Fr, IP, Human, Glioblastoma, A172, KG1C, T98G, U251 cells

- [An endothelial laminin isoform, laminin 8 \(alpha4beta1gamma1\), is secreted by blood neutrophils, promotes neutrophil migration and extravasation, and protects neutrophils from apoptosis.](#)

Wondimu Z, Geberhiwot T, Ingerpuu S, Juronen E, Xie X, Lindbom L, Doi M, Kortessmaa J, Thyboll J, Tryggvason K, Fadeel B, Patarroyo M.

Blood 2004 Sep; 104(6):1859.

Pathway

- [ECM-receptor interaction](#)
- [Focal adhesion](#)
- [Pathways in cancer](#)

- [Small cell lung cancer](#)

Disease

- [Cleft Lip](#)
- [Cleft Palate](#)
- [Coronary Artery Disease](#)
- [Genetic Predisposition to Disease](#)
- [Tooth Abnormalities](#)