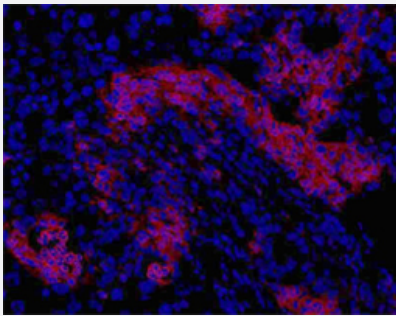


# Oval Cell Marker monoclonal antibody, clone OC2-2A6

Catalog # MAB7763

Size 100 uL

## Applications



### Immunofluorescence

Immunofluorescent staining of DDC treated mouse liver using Oval Cell Marker monoclonal antibody, clone OC2-2A6 (Cat # MAB7763).

## Specification

<b>Product Description</b>	Rat monoclonal antibody raised against native oval cell marker.
<b>Immunogen</b>	Native purified oval cell marker from nonparenchymal cells from DDC-treated mice to induce the oval cell response.
<b>Host</b>	Rat
<b>Reactivity</b>	Mouse
<b>Specificity</b>	Specific for proliferating hepatic periductal cells.
<b>Form</b>	Liquid
<b>Isotype</b>	IgG1
<b>Recommend Usage</b>	Flow Cytometry (1:50-1:100) Immunohistochemistry (Frozen sections) (1:100) The optimal working dilution should be determined by the end user.
<b>Storage Buffer</b>	In tissue culture supernatant (0.09% sodium azide)
<b>Storage Instruction</b>	Store at 4°C. Do not freeze.

**Note**

This product contains sodium azide: a POISONOUS AND HAZARDOUS SUBSTANCE which should be handled by trained staff only.

## Applications

- Immunohistochemistry (Frozen sections)

- Immunofluorescence

Immunofluorescent staining of DDC treated mouse liver using Oval Cell Marker monoclonal antibody, clone OC2-2A6 (Cat # MAB7763).

- Flow Cytometry

## Publication Reference

- [Retracted: outcome and immune reconstitution of HBV-specific immunity in patients with reactivation of occult HBV infection after alemtuzumab-containing chemotherapy regimen.](#)

Hui CK, Cheung WW, Leung KW, Cheng VC, Tang BS, Li IW, Luk JM, Lee NP, Kwong YL, Au WY, Yuen KY, Lau GK, Liang R. Hepatology 2008 Aug; 48(2):1.