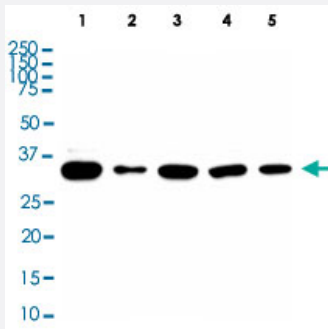


BRCC3 monoclonal antibody, clone AT3B1

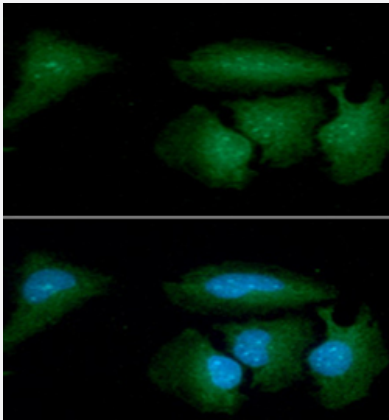
Catalog # MAB7555 Size 100 uL

Applications



Western Blot (Cell lysate)

Western blot analysis of Lane 1: HeLa cell lysate, Lane 2: HepG2 cell lysate, Lane 3: 293T cell lysate, Lane 4: MCF7 cell lysate, Lane 5: NIH3T3 cell lysate.



Immunofluorescence

Immunofluorescence analysis of HeLa cells. The cell was stained with BRCC3 monoclonal antibody, clone AT3B1 (1:100). The secondary antibody (green) was used Alexa Fluor 488. DAPI was stained the cell nucleus (blue).

Specification

Product Description	Mouse monoclonal antibody raised against full length recombinant BRCC3.
Immunogen	Recombinant protein corresponding to full length human BRCC3.
Host	Mouse
Reactivity	Human
Specificity	This antibody reacted with human BRCC3.
Form	Liquid

Purification	Protein G purification
Isotype	IgG1, kappa
Recommend Usage	ELISA Flow Cytometry Immunohistochemistry Immunocytochemistry Immunofluorescence Western Blot The optimal working dilution should be determined by the end user.
Storage Buffer	In PBS, pH 7.4 (10% glycerol, 0.02% sodium azide).
Storage Instruction	Store at 2°C to 8°C for 1 week. For long term storage, aliquot and store at -20°C to -80°C. Aliquot to avoid repeated freezing and thawing.
Note	This product contains sodium azide: a POISONOUS AND HAZARDOUS SUBSTANCE which should be handled by trained staff only.

Applications

- Western Blot (Cell lysate)

Western blot analysis of Lane 1: HeLa cell lysate, Lane 2: HepG2 cell lysate, Lane 3: 293T cell lysate, Lane 4: MCF7 cell lysate, Lane 5: NIH3T3 cell lysate.

- Immunocytochemistry

- Immunofluorescence

Immunofluorescence analysis of HeLa cells. The cell was stained with BRCC3 monoclonal antibody, clone AT3B1 (1:100). The secondary antibody (green) was used Alexa Fluor 488. DAPI was stained the cell nucleus (blue).

- Enzyme-linked Immunoabsorbent Assay

Gene Info — BRCC3

Entrez GeneID	79184
Protein Accession#	NP_077308
Gene Name	BRCC3
Gene Alias	BRCC36, C6.1A, CXorf53
Gene Description	BRCA1/BRCA2-containing complex, subunit 3

Omim ID	300617
Gene Ontology	Hyperlink
Gene Summary	This gene encodes a subunit of the BRCA1-BRCA2-containing complex (BRCC), which is an E3 ubiquitin ligase. This protein is also thought to be involved in the cellular response to ionizing radiation and progression through the G2/M checkpoint. Alternative splicing results in multiple transcript variants. [provided by RefSeq]
Other Designations	BRCA1/BRCA2-containing complex subunit 36 OTTHUMP00000061450 c6.1A

Publication Reference

- [Ubc13/Rnf8 ubiquitin ligases control foci formation of the Rap80/Abraxas/Brca1/Brcc36 complex in response to DNA damage.](#)
Wang B, Elledge SJ.
PNAS 2007 Dec; 104(52):20759.
- [BRCC36 is essential for ionizing radiation-induced BRCA1 phosphorylation and nuclear foci formation.](#)
Chen X, Arciero CA, Wang C, Broccoli D, Godwin AK.
Cancer Research 2006 May; 66(10):5039.
- [Regulation of BRCC, a holoenzyme complex containing BRCA1 and BRCA2, by a signalosome-like subunit and its role in DNA repair.](#)
Dong Y, Hakimi MA, Chen X, Kumaraswamy E, Cooch NS, Godwin AK, Shiekhattar R.
Molecular Cell 2003 Nov; 12(5):1087.

Application: WB-Tr, Human, HEK 293 cells