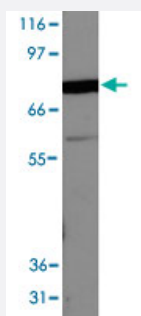


PALLD monoclonal antibody, clone 1E6

Catalog # MAB7377

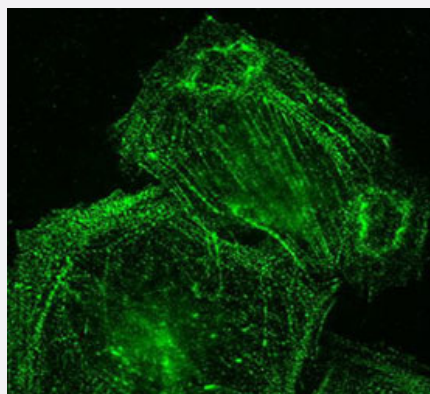
Size 100 uL

Applications



Western Blot (Cell lysate)

Western blot on MDA-MB-231 lysate with PALLD monoclonal antibody, clone 1E6 (Cat # MAB7377).



Immunofluorescence

Immunofluorescence staining on A7r5 cells with PALLD monoclonal antibody, clone 1E6 (Cat # MAB7377).

Specification

Product Description	Mouse monoclonal antibody raised against native PALLD.
Immunogen	Native purified chicken PALLD.
Host	Mouse
Reactivity	Chicken, Human, Mouse, Rat
Specificity	This antibody is useful for Western blot where a band is seen at ~85 KDa.
Form	Liquid

Isotype	IgG1
Recommend Usage	Immunofluorescence (1:20-1:100) Immunoprecipitation (25 ug/mL lysate) Western Blot (1 ug/mL) Immunohistochemistry (Formalin/PFA-fixed paraffin-embedded sections) (1:50-1:200) The optimal working dilution should be determined by the end user.
Storage Buffer	In Tris-glycine, 150 mM NaCl, pH 7.5 (0.05% sodium azide)
Storage Instruction	Store at 4°C for short term. For long term storage store at -20°C. Aliquot to avoid repeated freezing and thawing.
Note	This product contains sodium azide: a POISONOUS AND HAZARDOUS SUBSTANCE which should be handled by trained staff only.

Applications

- Western Blot (Cell lysate)

Western blot on MDA-MB-231 lysate with PALLD monoclonal antibody, clone 1E6 (Cat # MAB7377).

- Immunohistochemistry (Formalin/PFA-fixed paraffin-embedded sections)

- Immunofluorescence

Immunofluorescence staining on A7r5 cells with PALLD monoclonal antibody, clone 1E6 (Cat # MAB7377).

- Immunoprecipitation

Gene Info — PALLD

Entrez GeneID	422428
Gene Name	PALLD
Gene Alias	-
Gene Description	palladin, cytoskeletal associated protein
Gene Ontology	Hyperlink
Gene Summary	O
Other Designations	-