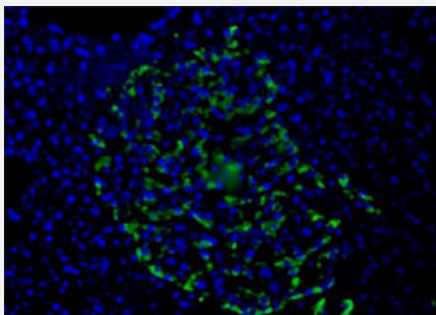


Pancreatic alpha cell marker monoclonal antibody, clone DHIC2-2C12

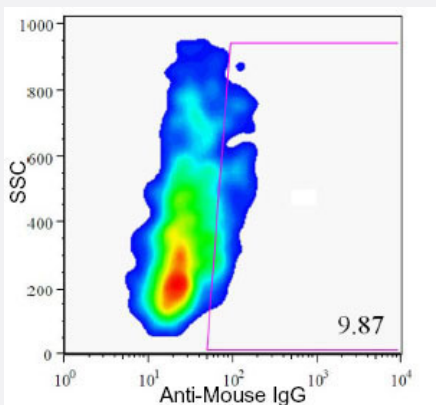
Catalog # MAB7226 Size 100 uL

Applications



Immunofluorescence

Immunofluorescence on frozen section of human pancreas with pancreatic alpha cell marker monoclonal antibody, clone DHIC2-2C12 (Cat # MAB7226).



Flow Cytometry

Flow Cytometric analysis of enzyme dispersed human pancreas cells with pancreatic alpha cell marker monoclonal antibody, clone DHIC2-2C12 (Cat # MAB7226).

Specification

Product Description	Mouse monoclonal antibody raised against pancreatic alpha cell marker.
Immunogen	Native purified human pancreatic enriched alpha cells.
Host	Mouse
Reactivity	Human
Specificity	Specific for alpha endocrine cell types.

Form	Liquid
Isotype	IgM
Recommend Usage	Flow Cytometry (1:50-1:100) Immunohistochemistry (Frozen sections) (1:100) The optimal working dilution should be determined by the end user.
Storage Buffer	In tissue culture supernatant
Storage Instruction	Store at 4°C. Do not freeze.

Applications

- Immunohistochemistry (Frozen sections)

- Immunohistochemistry

- Immunofluorescence

Immunofluorescence on frozen section of human pancreas with pancreatic alpha cell marker monoclonal antibody, clone DHIC2-2C12 (Cat # MAB7226).

- Flow Cytometry

Flow Cytometric analysis of enzyme dispersed human pancreas cells with pancreatic alpha cell marker monoclonal antibody, clone DHIC2-2C12 (Cat # MAB7226).

Publication Reference

- [Isolation of major pancreatic cell types and long-term culture-initiating cells using novel human surface markers.](#)

Dorrell C, Abraham SL, Lanxon-Cookson KM, Canaday PS, Streeter PR, Grompe M.

Stem Cell Research 2008 May; 1(3):183.

Application: Flow Cyt, IF, IHC-Fr, Human, Human pancreatic cells