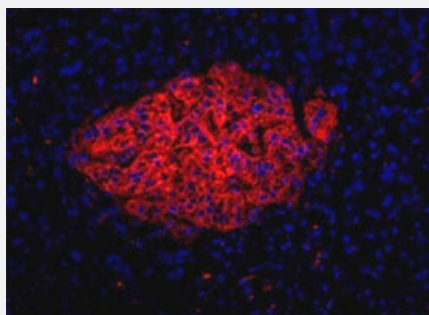


Endocrine cell marker monoclonal antibody, clone HIC0-4F9

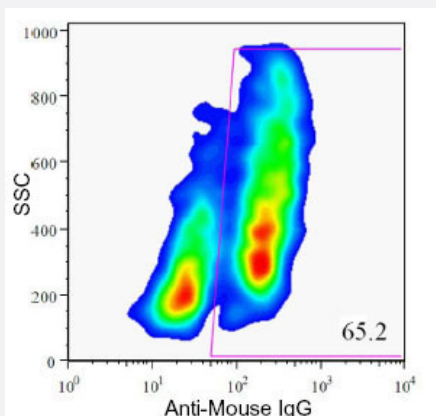
Catalog # MAB7161 Size 100 uL

Applications



Immunofluorescence

Immunofluorescence on frozen section of human pancreas with Endocrine cell marker monoclonal antibody, clone HIC0-4F9 (Cat # MAB7161).



Flow Cytometry

Flow Cytometric analysis of enzyme dispersed human pancreas cells with Endocrine cell marker monoclonal antibody, clone HIC0-4F9 (Cat # MAB7161).

Specification

Product Description	Mouse monoclonal antibody raised against Endocrine cell marker.
Immunogen	Native purified from human pancreatic enriched islet cells containing low levels of exocrine and ductal cells.
Host	Mouse
Reactivity	Human
Specificity	Specific for multiple endocrine cell types.

Form	Liquid
Isotype	IgG1
Recommend Usage	Flow Cytometry (1:50-1:100) Immunohistochemistry (Frozen sections) (1:100) The optimal working dilution should be determined by the end user.
Storage Buffer	In tissue culture supernatant (0.09% sodium azide)
Storage Instruction	Store at 4°C. Do not freeze.
Note	This product contains sodium azide: a POISONOUS AND HAZARDOUS SUBSTANCE which should be handled by trained staff only.

Applications

- Immunohistochemistry (Frozen sections)

- Immunohistochemistry

- Immunofluorescence

Immunofluorescence on frozen section of human pancreas with Endocrine cell marker monoclonal antibody, clone HIC0-4F9 (Cat # MAB7161).

- Flow Cytometry

Flow Cytometric analysis of enzyme dispersed human pancreas cells with Endocrine cell marker monoclonal antibody, clone HIC0-4F9 (Cat # MAB7161).

Publication Reference

- [Isolation of major pancreatic cell types and long-term culture-initiating cells using novel human surface markers.](#)

Dorrell C, Abraham SL, Lanxon-Cookson KM, Canaday PS, Streeter PR, Grompe M.

Stem Cell Research 2008 May; 1(3):183.

Application: IF, IHC-Fr, Human, Human pancreatic cells