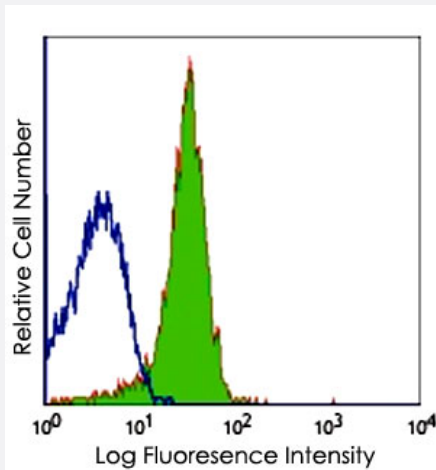


Pecam1 monoclonal antibody, clone MEC13.3

Catalog # MAB7099

Size 100 uL

Applications



Flow Cytometry

C57BL/6 mouse splenocytes stained with Pecam1 monoclonal antibody, clone MEC13.3 (Cat # MAB7099), followed by anti-rat IgG FITC.

Specification

Product Description Rat monoclonal antibody raised against Pecam1.

Immunogen Full length mouse Pecam1.

Host Rat

Reactivity Mouse

Specificity CD31 (MEC13.3).

Form Liquid

Recommend Usage

- Flow Cytometry (1:1-1:10)
- Immunocytochemistry (1:1-1:10)
- Immunohistochemistry (Frozen sections) (1:1-1:10)
- Immunohistochemistry (Formalin/PFA-fixed paraffin-embedded sections) (1:1-1:10)
- Immunoprecipitation (1:1-1:10)
- The optimal working dilution should be determined by the end user.

Storage Buffer	In PBS, pH 7.2 (0.09% sodium azide)
Storage Instruction	Store at 4°C. For long term storage store at -20°C. Aliquot to avoid repeated freezing and thawing.
Note	This product contains sodium azide: a POISONOUS AND HAZARDOUS SUBSTANCE which should be handled by trained staff only.

Applications

- Immunohistochemistry
- Immunoprecipitation
- Flow Cytometry

C57BL/6 mouse splenocytes stained with Pecam1 monoclonal antibody, clone MEC13.3 (Cat # MAB7099), followed by anti-rat IgG FITC.

Gene Info — Pecam1

Entrez GeneID	18613
Gene Name	Pecam1
Gene Alias	C85791, Cd31, MGC102160, PECAM-1, Pecam
Gene Description	platelet/endothelial cell adhesion molecule 1
Gene Ontology	Hyperlink
Other Designations	OTTMUSP00000003452 OTTMUSP00000003454 PECAM-1/CD31

Publication Reference

- [Involvement of endothelial PECAM-1/CD31 in angiogenesis.](#)

DeLisser HM, Christofidou-Solomidou M, Strieter RM, Burdick MD, Robinson CS, Wexler RS, Kerr JS, Garlanda C, Merwin JR, Madri JA, Albelda SM.

The American Journal of Pathology 1997 Sep; 151(3):671.

Application: Func, Mouse, Mouse vessels

- [Neutrophil platelet endothelial cell adhesion molecule-1 participates in neutrophil recruitment at inflammatory sites and is down-regulated after leukocyte extravasation.](#)

Christofidou-Solomidou M, Nakada MT, Williams J, Muller WA, DeLisser HM.

Journal of Immunology 1997 May; 158(10):4872.

Application: Flow Cyt, Func, Human, Mouse, HUVECs, Mouse leukocytes

- [Monoclonal antibodies specific for endothelial cells of mouse blood vessels. Their application in the identification of adult and embryonic endothelium.](#)

Vecchi A, Garlanda C, Lampugnani MG, Resnati M, Matteucci C, Stoppacciaro A, Schnurch H, Risau W, Ruco L, Mantovani A, et al..

Eur J Cell Biol 1994 Apr; 63(2):247.