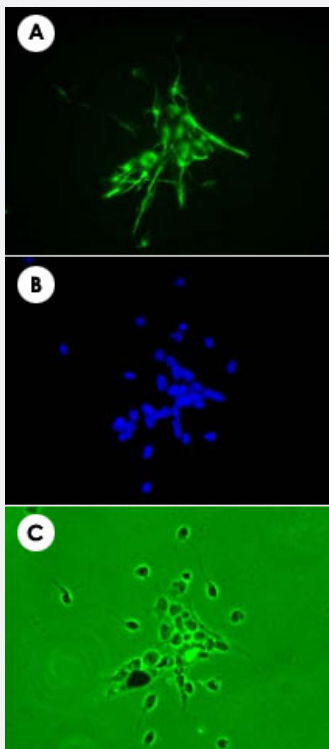


# Nes monoclonal antibody, clone 7A3

Catalog # MAB6767      Size 200 ug

## Applications



### Immunofluorescence

Primary culture of neural progenitor cells from mouse fetal brain stained with Nes monoclonal antibody, clone 7A3 (Cat # MAB6767) (A), stained with Hoechst (B), and without staining (C).

## Specification

Product Description	Rat monoclonal antibody raised against native Nes.
Immunogen	Native Nes from mouse E16 embryonic cerebral cortex extracts.
Host	Rat
Reactivity	Mouse
Specificity	This antibody is specific to mouse Nes.
Form	Liquid

Isotype	IgG2b, kappa
Recommend Usage	The optimal working dilution should be determined by the end user.
Storage Buffer	In PBS (50% glycerol)
Storage Instruction	Store at 4°C.

## Applications

- Immunohistochemistry
- Immunocytochemistry
- Immunofluorescence

Primary culture of neural progenitor cells from mouse fetal brain stained with Nes monoclonal antibody, clone 7A3 (Cat # MAB6767) (A), stained with Hoechst (B), and without staining (C).

## Gene Info — Nes

Entrez GeneID	<a href="#">18008</a>
Gene Name	Nes
Gene Alias	AA166324, C78523, ESTM46
Gene Description	nestin
Gene Ontology	<a href="#">Hyperlink</a>
Other Designations	intermediate filament protein

## Publication Reference

- [Nestin in central nervous system cells.](#)

Gilyarov AV.

Neuroscience and Behavioral Physiology 2008 Feb; 38(2):165.

- [Identification of major cell classes in the developing mammalian nervous system.](#)

Hockfield S, McKay RD.

Journal of Neuroscience 1985 Dec; 5(12):3310.

Application: IEM, IHC, WB-Re, WB-Ti, Rat, Rat brain