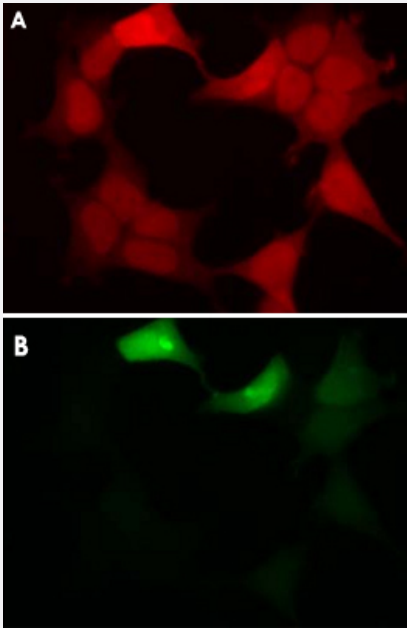


GFP monoclonal antibody, clone 1A5

Catalog # MAB6746 Size 100 ug

Applications



Immunofluorescence

GFP-expressed in COS-1 cells (A) and immunofluorescent staining of the same sample with GFP monoclonal antibody, clone 1A5 (Cat # MAB6746) (B).

Specification

Product Description	Rat monoclonal antibody raised against recombinant GFP.
Immunogen	Recombinant protein corresponding to <i>Aequorea victoria</i> GFP.
Host	Rat
Reactivity	Jellyfishes
Specificity	This antibody is specific to GFP and GFP-fused proteins.
Form	Liquid
Isotype	IgG1, kappa

Recommend Usage	Western Blot (1 ug/mL) The optimal working dilution should be determined by the end user.
Storage Buffer	In PBS (50% glycerol)
Storage Instruction	Store at -20°C. Aliquot to avoid repeated freezing and thawing.

Applications

- CHIP
- Western Blot
- Immunocytochemistry
- Immunofluorescence
GFP-expressed in COS-1 cells (A) and immunofluorescent staining of the same sample with GFP monoclonal antibody, clone 1A5 (Cat # MAB6746) (B).
- Immunoprecipitation
- Enzyme-linked Immunoabsorbent Assay

Publication Reference

- [The green fluorescent protein.](#)
Tsien RY.
Annual Review of Biochemistry 1998 Jan; 67:509.
Application: WB-Tr, Human, Mammalian cells
- [Green fluorescent protein as a marker for gene expression.](#)
Chalfie M, Tu Y, Euskirchen G, Ward WW, Prasher DC.
Science 1994 Feb; 263(5148):802.

- [Extraction, purification and properties of aequorin, a bioluminescent protein from the luminous hydromedusan, Aequorea.](#)

SHIMOMURA O, JOHNSON FH, SAIGA Y.

Journal of Cellular and Comparative Physiology 1962 Jun; 59:223.