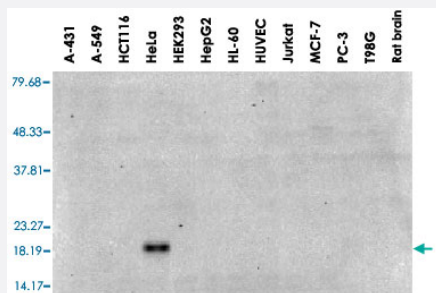


# CRYAB monoclonal antibody, clone 3A10.C9

Catalog # MAB6643      Size 200 ug

## Applications



## Western Blot

Western blot analysis from cell and tissue lysates with CRYAB monoclonal antibody, clone 3A10.C9 (Cat # MAB6643).

## Specification

<b>Product Description</b>	Mouse monoclonal antibody raised against native CRYAB.
<b>Immunogen</b>	Native purified CRYAB.
<b>Host</b>	Mouse
<b>Reactivity</b>	Bovine, Human
<b>Specificity</b>	Detects a band at ~20KDa (predicted mol.weight is ~21KDa) corresponding to alphaB-crystallin. Does not cross-react with alphaA-crystallin, betaL-crystallin, betaH-crystallin, gamma-crystallin, Hsp25, Hsp27 or Hsp47 proteins.
<b>Form</b>	Liquid
<b>Isotype</b>	IgG1
<b>Recommend Usage</b>	Western Blot (1:2000) The optimal working dilution should be determined by the end user.
<b>Storage Buffer</b>	In PBS, pH 7.2 (50% glycerol, 0.09% sodium azide)
<b>Storage Instruction</b>	Store at -20°C. Aliquot to avoid repeated freezing and thawing.

**Note**

This product contains sodium azide: a POISONOUS AND HAZARDOUS SUBSTANCE which should be handled by trained staff only.

## Applications

- Western Blot

Western blot analysis from cell and tissue lysates with CRYAB monoclonal antibody, clone 3A10.C9 (Cat # MAB6643).

- Enzyme-linked Immunoabsorbent Assay

## Publication Reference

- [alpha-Crystallin distribution in retinal pigment epithelium and effect of gene knockouts on sensitivity to oxidative stress.](#)

Yaung J, Jin M, Barron E, Spee C, Wawrousek EF, Kannan R, Hinton DR.

Molecular Vision 2007 Apr; 13:566.

Application: IEM, WB, Human, Human retinal pigment epithelium

- [Association of the chaperone alphaB-crystallin with titin in heart muscle.](#)

Bullard B, Ferguson C, Minajeva A, Leake MC, Gautel M, Labeit D, Ding L, Labeit S, Horwitz J, Leonard KR, Linke WA.

The Journal of Biological Chemistry 2004 Feb; 279(9):7917.

Application: Dot, IF, WB, Rabbit, Rabbit cardiac myofibrils

- [Alpha-crystallin.](#)

Horwitz J.

Experimental Eye Research 2003 Feb; 76(2):145.