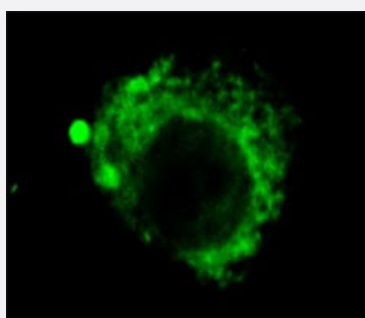


Lamp2 monoclonal antibody, clone GL2A7

Catalog # MAB6635 Size 100 ug

Applications



Immunofluorescence

Immunofluorescence showing distribution of lysosomes in CEC cells with Lamp2 monoclonal antibody, clone GL2A7 (Cat # MAB6635).

Courtesy of Eunduck E.P. Kay, Doheny Eye Institute

Specification

Product Description	Mouse monoclonal antibody raised against native Lamp2.
Immunogen	Native purified Lamp2 from mouse liver.
Host	Mouse
Reactivity	Mouse, Rabbit
Specificity	This antibody will label the presumptive lysosomes and late endosomes in cells that have been permeabilized with saponin.
Form	Liquid
Isotype	IgG1
Recommend Usage	Immunocytochemistry (1:500-1:1000) The optimal working dilution should be determined by the end user.
Storage Buffer	In PBS (0.09% sodium azide, 50% glycerol)
Storage Instruction	Store at -20°C. Aliquot to avoid repeated freezing and thawing.

Note

This product contains sodium azide: a POISONOUS AND HAZARDOUS SUBSTANCE which should be handled by trained staff only.

Applications

- Immunocytochemistry

- Immunofluorescence

Immunofluorescence showing distribution of lysosomes in CEC cells with Lamp2 monoclonal antibody, clone GL2A7 (Cat # MAB6635).

Courtesy of Eunduck E.P. Kay, Doheny Eye Institute

- Immunoprecipitation

Gene Info — Lamp2

Entrez GeneID [16784](#)

Gene Name Lamp2

Gene Alias CD107b, Lamp-2, Lamp-2a, Lamp-2b, Lamp-2c, Mac3

Gene Description lysosomal-associated membrane protein 2

Gene Ontology [Hyperlink](#)

Other Designations Lamp II|OTTMUSP00000018739|OTTMUSP00000018801|lysosomal membrane glycoprotein 2|lysosome-associated membrane protein-2

Publication Reference

- [Accumulation of autophagic vacuoles and cardiomyopathy in LAMP-2-deficient mice.](#)

Tanaka Y, Guhde G, Suter A, Eskelinen EL, Hartmann D, Lullmann-Rauch R, Janssen PM, Blanz J, von Figura K, Saftig P. Nature 2000 Aug; 406(6798):902.

Application: WB-Ti, Mouse, Liver, Kidney

- [A di-leucine-based motif in the cytoplasmic tail of LIMP-II and tyrosinase mediates selective binding of AP-3.](#)

Honing S, Sandoval IV, von Figura K.

The EMBO Journal 1998 Aug; 17(5):1304.

- [Lysosome-associated membrane proteins h-LAMP1 \(CD107a\) and h-LAMP2 \(CD107b\) are activation-dependent cell surface glycoproteins in human peripheral blood mononuclear cells which mediate cell adhesion to vascular endothelium.](#)

Kannan K, Stewart RM, Bounds W, Carlsson SR, Fukuda M, Betzing KW, Holcombe RF.

Cellular Immunology 1996 Jul; 171(1):10.