

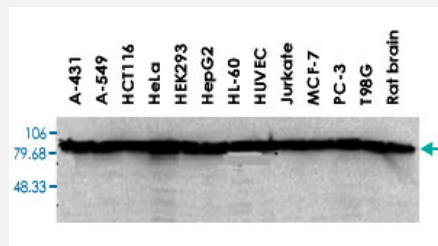
# HSP90AA1/HSP90AA2 monoclonal antibody, clone Hyb-K41220A

Catalog # MAB6631      Size 100 ug

## Applications

### Western Blot

Western blot analysis from cell lysates with HSP90AA1/HSP90AA2 monoclonal antibody, clone Hyb-K41220A (Cat # MAB6631).



## Specification

<b>Product Description</b>	Mouse monoclonal antibody raised against recombinant HSP90AA1/HSP90AA2.
<b>Immunogen</b>	Recombinant protein corresponding to human HSP90AA1/HSP90AA2.
<b>Host</b>	Mouse
<b>Reactivity</b>	Human, Rat, S. pombe, Yeast
<b>Specificity</b>	Detects 90kD proteins corresponding to the molecular mass of hsp90 alpha or beta.
<b>Form</b>	Liquid
<b>Isotype</b>	IgG2a
<b>Recommend Usage</b>	Western Blot (1 ug/mL) The optimal working dilution should be determined by the end user.
<b>Storage Buffer</b>	In PBS, pH 7.2 (50% glycerol, 0.09% sodium azide)
<b>Storage Instruction</b>	Store at -20°C. Aliquot to avoid repeated freezing and thawing.

**Note**

This product contains sodium azide: a POISONOUS AND HAZARDOUS SUBSTANCE which should be handled by trained staff only.

## Applications

- Western Blot

Western blot analysis from cell lysates with HSP90AA1/HSP90AA2 monoclonal antibody, clone Hyb-K41220A (Cat # MAB6631).

- Immunohistochemistry

- Enzyme-linked Immunoabsorbent Assay

## Gene Info — HSP90AA1

Entrez GeneID	<a href="#">3320</a>
Gene Name	HSP90AA1
Gene Alias	FLJ31884, HSP86, HSP89A, HSP90A, HSP90N, HSPC1, HSPCA, HSPCAL1, HSPCAL4, HSPN, Hsp89, Hsp90, LAP2
Gene Description	heat shock protein 90kDa alpha (cytosolic), class A member 1
Omim ID	<a href="#">140571</a>
Gene Ontology	<a href="#">Hyperlink</a>
Gene Summary	HSP90 proteins are highly conserved molecular chaperones that have key roles in signal transduction, protein folding, protein degradation, and morphologic evolution. HSP90 proteins normally associate with other cochaperones and play important roles in folding newly synthesized proteins or stabilizing and refolding denatured proteins after stress. There are 2 major cytosolic HSP90 proteins, HSP90AA1, an inducible form, and HSP90AB1 (MIM 140572), a constitutive form. Other HSP90 proteins are found in endoplasmic reticulum (HSP90B1; MIM 191175) and mitochondria (TRAP1; MIM 606219) (Chen et al., 2005 [PubMed 16269234]).[supplied by OMIM]
Other Designations	heat shock 90kD protein 1, alpha heat shock 90kD protein 1, alpha-like 4 heat shock 90kD protein, alpha-like 4 heat shock 90kDa protein 1, alpha

## Gene Info — HSP90AA2

Entrez GeneID	<a href="#">3324</a>
---------------	----------------------

Gene Name	HSP90AA2
Gene Alias	HSP90ALPHA, HSPCA, HSPCAL3
Gene Description	heat shock protein 90kDa alpha (cytosolic), class A member 2
Omim ID	<a href="#">140575</a>
Gene Ontology	<a href="#">Hyperlink</a>
Gene Summary	HSP90 proteins are highly conserved molecular chaperones that have key roles in signal transduction, protein folding, protein degradation, and morphologic evolution. HSP90 proteins normally associate with other cochaperones and play important roles in folding newly synthesized proteins or stabilizing and refolding denatured proteins after stress. HSP90AA2 is a cytosolic HSP90 protein. Other HSP90 proteins are found in endoplasmic reticulum (HSP90B1; MIM 191175) and mitochondria (TRAP1; MIM 606219) (Chen et al., 2005 [PubMed 16269234]). See HSP90AA1 (MIM 140571) for further information on HSP90 proteins.[supplied by OMIM]
Other Designations	-

## Publication Reference

- [Hsp90 inhibitors as novel cancer chemotherapeutic agents.](#)

Neckers L.

Trends in Molecular Medicine 2002 Apr; 8(4 Suppl):S55.

- [Steroid receptor interactions with heat shock protein and immunophilin chaperones.](#)

Pratt WB, Toft DO.

Endocrine Reviews 1997 Jun; 18(3):306.

- [Inhibition of heat shock protein HSP90-pp60v-src heteroprotein complex formation by benzoquinone ansamycins: essential role for stress proteins in oncogenic transformation.](#)

Whitesell L, Mimnaugh EG, De Costa B, Myers CE, Neckers LM.

PNAS 1994 Aug; 91(18):8324.

Application: WB-Ce, Human, Mouse, NIH/3T3, PC-3M cells

## Pathway

- [Antigen processing and presentation](#)
- [Pathways in cancer](#)

- [Prostate cancer](#)

## Disease

- [Asthma](#)
- [Cardiovascular Diseases](#)
- [Cleft Lip](#)
- [Cleft Palate](#)
- [Diabetes Mellitus](#)
- [Edema](#)