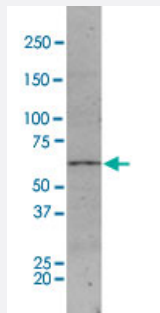


Gls monoclonal antibody, clone 120

Catalog # MAB6586

Size 50 ug

Applications



Western Blot (Tissue lysate)

Western blot analysis of rat brain tissue lysate with GlS monoclonal antibody, clone 120 (Cat # MAB6586).

Specification

Product Description	Mouse monoclonal antibody raised against native GlS.
Immunogen	Native purified GlS from rat brain.
Host	Mouse
Reactivity	Rat
Form	Liquid
Recommend Usage	Immunocytochemistry (10 ug/mL) Immunohistochemistry (10 ug/mL) The optimal working dilution should be determined by the end user.
Storage Buffer	In PBS (0.1% proclin, 2% Block Ace)
Storage Instruction	Store at 4°C. For long term storage store at -20°C. Aliquot to avoid repeated freezing and thawing.

Applications

- Western Blot (Tissue lysate)

Western blot analysis of rat brain tissue lysate with Gls monoclonal antibody, clone 120 (Cat # MAB6586).

- Immunohistochemistry

- Immunocytochemistry

Gene Info — GlS

Entrez GeneID	24398
---------------	-----------------------

Gene Name	GlS
-----------	-----

Gene Alias	Glut, RATGLUT
------------	---------------

Gene Description	glutaminase
------------------	-------------

Gene Ontology	Hyperlink
---------------	---------------------------

Other Designations	-
--------------------	---

Publication Reference

- [Glutaminase-like immunoreactivity in the lower brainstem and cerebellum of the adult rat.](#)

Kaneko T, Itoh K, Shigemoto R, Mizuno N.

Neuroscience 1989 Jan; 32(1):79.

Application: IHC-Fr, Rat, Rat brain

- [Correlation between immunochemical characteristics and immunohistochemical applicability of nine lines of monoclonal antibodies against rat brain glutaminase.](#)

Kaneko T, Urade Y, Mizuno N.

The Journal of Histochemistry and Cytochemistry 1988 Aug; 36(8):997.

Application: Dot-Pep, Func, IHC-Fr, WB-Re, Rat, Purified proteins, Rat brain

- [Production, characterization, and immunohistochemical application of monoclonal antibodies to glutaminase purified from rat brain.](#)

T Kaneko, Y Urade, Y Watanabe, N Mizuno.

Journal of Neuroscience 1987 Jan; 7(1):302.

Application: Enzyme, IHC-Fr, WB-Re, WB-Ti, Rat, Rat brain, Recombinant proteins