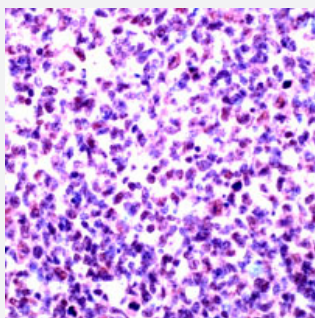


SP1 monoclonal antibody, clone 15H09

Catalog # MAB6565 Size 100 ug

Applications



Immunohistochemistry (Formalin/PFA-fixed paraffin-embedded sections)

Human tonsil tissue stained with SP1 monoclonal antibody, clone 15H09 (Cat # MAB6565) at 1 : 50 for 10 min at RT. Staining of formalin-fixed tissue requires boiling tissue sections in 10 mM citrate buffer, pH 6.0 for 10 min followed by cooling at RT for 20 min.

Specification

Product Description	Mouse monoclonal antibody raised against partial recombinant SP1.
Immunogen	Recombinant protein corresponding to amino acids 150-200 of human SP1.
Host	Mouse
Theoretical MW (kDa)	90
Reactivity	Human
Specificity	This affinity purified antibody recognizes ~90 KDa of human SP1.
Form	Liquid
Isotype	IgG1
Recommend Usage	Western Blot (0.1-1 ug/mL) ELISA (0.01-0.1 ug/mL) Immunoprecipitation (2-5 ug/mL) Immunohistochemistry (1:50) Flow Cytometry (5-10 ug/mL) The optimal working dilution should be determined by the end user.

Storage Buffer

In TBS, pH 7.2 (BSA, 10% Proclin300)

Storage Instruction

Store at 4°C. For long term storage store at -20°C or lower.
Aliquot to avoid repeated freezing and thawing.

Applications

- Western Blot
- Immunohistochemistry (Formalin/PFA-fixed paraffin-embedded sections)

Human tonsil tissue stained with SP1 monoclonal antibody, clone 15H09 (Cat # MAB6565) at 1 : 50 for 10 min at RT. Staining of formalin-fixed tissue requires boiling tissue sections in 10 mM citrate buffer, pH 6.0 for 10 min followed by cooling at RT for 20 min.
- Enzyme-linked Immunoabsorbent Assay

Gene Info — SP1

Entrez GeneID[6667](#)**Gene Name**

SP1

Gene Alias

-

Gene Description

Sp1 transcription factor

Omim ID[189906](#)**Gene Ontology**[Hyperlink](#)**Other Designations**

specificity protein 1

Pathway

- [TGF-beta signaling pathway](#)

Disease

- [Head and Neck Neoplasms](#)

- [Neoplasm Recurrence](#)
- [Neoplasms](#)