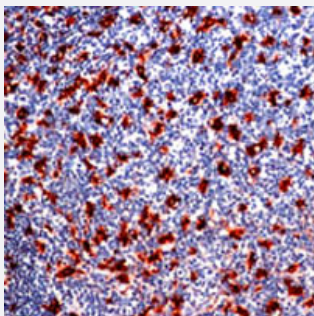


CD68 monoclonal antibody, clone SPM281

Catalog # MAB6564

Size 100 ug

Applications



Immunohistochemistry (Formalin/PFA-fixed paraffin-embedded sections)

Human tonsil tissue stained with CD68 monoclonal antibody, clone SPM281 (Cat # MAB6564) at 1 : 100 for 10 min at RT. Staining of formalin-fixed tissue requires boiling tissue sections in 10 mM citrate buffer, pH 6.0 for 10 min followed by cooling at RT for 20 min.

Specification

Product Description	Mouse monoclonal antibody raised against CD68.
Immunogen	Native from subcellular fraction of human alveolar macrophages.
Host	Mouse
Theoretical MW (kDa)	110
Reactivity	Human, Monkey, Mouse, Rat
Specificity	This affinity purified antibody recognizes ~110 KDa of human CD68.
Form	Liquid
Isotype	IgG1
Recommend Usage	Western Blot (0.1-1 ug/mL) ELISA (0.01-0.1 ug/mL) Immunoprecipitation (2-5 ug/mL) Immunohistochemistry (1:100) The optimal working dilution should be determined by the end user.
Storage Buffer	In PBS, pH 7.2 (BSA, 10% Proclin300)

Storage Instruction

Store at 4°C. For long term storage store at -20°C or -80°C.
Aliquot to avoid repeated freezing and thawing.

Applications

- Western Blot
- Immunohistochemistry (Formalin/PFA-fixed paraffin-embedded sections)

Human tonsil tissue stained with CD68 monoclonal antibody, clone SPM281 (Cat # MAB6564) at 1 : 100 for 10 min at RT.
Staining of formalin-fixed tissue requires boiling tissue sections in 10 mM citrate buffer, pH 6.0 for 10 min followed by cooling at RT for 20 min.

- Enzyme-linked Immunoabsorbent Assay

Gene Info — CD68

Entrez GeneID [968](#)

Gene Name CD68

Gene Alias DKFZp686M18236, GP110, SCARD1

Gene Description CD68 molecule

Omim ID [153634](#)

Gene Ontology [Hyperlink](#)

Gene Summary This gene encodes a 110-kD transmembrane glycoprotein that is highly expressed by human monocytes and tissue macrophages. It is a member of the lysosomal/endosomal-associated membrane glycoprotein (LAMP) family. The protein primarily localizes to lysosomes and endosomes with a smaller fraction circulating to the cell surface. It is a type I integral membrane protein with a heavily glycosylated extracellular domain and binds to tissue- and organ-specific lectins or selectins. The protein is also a member of the scavenger receptor family. Scavenger receptors typically function to clear cellular debris, promote phagocytosis, and mediate the recruitment and activation of macrophages. Alternative splicing results in multiple transcripts encoding different isoforms. [provided by RefSeq]

Other Designations CD68 antigen|OTTHUMP00000135285|macrophage antigen CD68|macrosialin|scavenger receptor class D, member 1

Publication Reference

- [Accelerated accumulation of retinal \$\alpha\$ -synuclein \(pSer129\) and tau, neuroinflammation and autophagic dysregulation in a seeded mouse model of Parkinson's disease.](#)

Mammadova N, Summers CM, Kokemuller RD, He Q, Ding S, Baron T, Yu C, Valentine RJ, Sakaguchi DS, Kanthasamy AG, Greenlee JJ, Heather West Greenlee M.

Neurobiology of Disease 2019 Jan; 121:1.

Application: IF, IHC-P, Mouse, Mouse retina

- [Evolutional Characterization of Photochemically Induced Stroke in Rats: a Multimodality Imaging and Molecular Biological Study.](#)

Liu NW, Ke CC, Zhao Y, Chen YA, Chan KC, Tan DT, Lee JS, Chen YY, Hsu TW, Hsieh YJ, Chang CW, Yang BH, Huang WS, Liu RS.

Translational Stroke Research 2016 Dec; 8(3):244.

Application: IHC-P, Rat, Rat brain

- [Combination of cadmium and high cholesterol levels as a risk factor for heart fibrosis.](#)

Turkcan A, Scharinger B, Grabmann G, Keppler BK, Laufer G, Bernhard D, Messner B.

Toxicological Sciences 2015 Jun; 145(2):360.

Application: IF, Mouse, Hearts

Pathway

- [Lysosome](#)