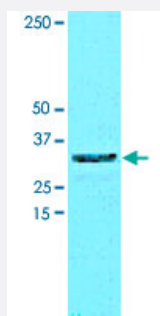


HAX1 monoclonal antibody, clone AT3C5

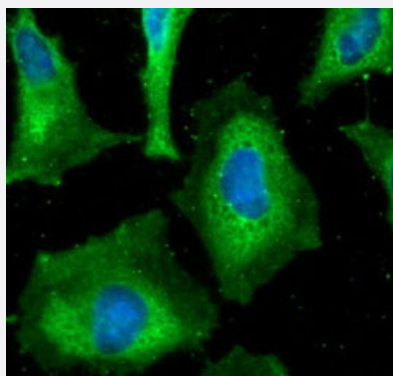
Catalog # MAB6510 Size 100 uL

Applications



Western Blot (Cell lysate)

Western blot analysis of HeLa cell lysate were resolved by SDS-PAGE, transferred to NC membrane and probed with HAX1 monoclonal antibody, clone AT3C5 (Cat # MAB6510) (1 : 1000). Proteins were visualized using a goat anti-mouse secondary antibody conjugated to HRP and an ECL detection system.



Immunofluorescence

Immunofluorescence analysis of HeLa cells. The cell was stained with HAX1 monoclonal antibody, clone AT3C5 (1:100). The secondary antibody (green) was used Alexa Fluor 488. DAPI was stained the cell nucleus (blue).

Specification

Product Description	Mouse monoclonal antibody raised against full length recombinant HAX1.
Immunogen	Recombinant protein corresponding to full length human HAX1.
Host	Mouse
Reactivity	Human
Form	Liquid
Purification	Protein G purification

Isotype	IgG2b, kappa
Recommend Usage	ELISA Immunocytochemistry Immunofluorescence Western Blot The optimal working dilution should be determined by the end user.
Storage Buffer	In PBS, pH 7.4 (10% glycerol, 0.02% sodium azide).
Storage Instruction	Store at 2°C to 8°C for 1 week. For long term storage, aliquot and store at -20°C to -80°C. Aliquot to avoid repeated freezing and thawing.
Note	This product contains sodium azide: a POISONOUS AND HAZARDOUS SUBSTANCE which should be handled by trained staff only.

Applications

- Western Blot (Cell lysate)

Western blot analysis of HeLa cell lysate were resolved by SDS-PAGE, transferred to NC membrane and probed with HAX1 monoclonal antibody, clone AT3C5 (Cat # MAB6510) (1 : 1000). Proteins were visualized using a goat anti-mouse secondary antibody conjugated to HRP and an ECL detection system.

- Immunocytochemistry

- Immunofluorescence

Immunofluorescence analysis of HeLa cells. The cell was stained with HAX1 monoclonal antibody, clone AT3C5 (1:100). The secondary antibody (green) was used Alexa Fluor 488. DAPI was stained the cell nucleus (blue).

- Enzyme-linked Immunoabsorbent Assay

Gene Info — HAX1

Entrez GeneID	10456
Protein Accession#	NP_006109
Gene Name	HAX1
Gene Alias	FLJ17042, FLJ18492, FLJ93803, HCLSBP1, HS1BP1, SCN3
Gene Description	HCLS1 associated protein X-1
Omim ID	605998 610738

Gene Ontology

[Hyperlink](#)

Gene Summary

The protein encoded by this gene is known to associate with hematopoietic cell-specific Lyn substrate 1, a substrate of Src family tyrosine kinases. It also interacts with the product of the polycystic kidney disease 2 gene, mutations in which are associated with autosomal-dominant polycystic kidney disease, and with the F-actin-binding protein, cortactin. It was earlier thought that this gene product is mainly localized in the mitochondria, however, recent studies indicate it to be localized in the cell body. Mutations in this gene result in autosomal recessive severe congenital neutropenia, also known as Kostmann disease. Two transcript variants encoding different isoforms have been found for this gene. [provided by RefSeq]

Other Designations

HCLS1 (and PKD2) associated protein|HS1 binding protein|OTTHUMP00000034190

Publication Reference

- [HAX1 deficiency causes autosomal recessive severe congenital neutropenia \(Kostmann disease\).](#)

Klein C, Grudzien M, Appaswamy G, Germeshausen M, Sandrock I, Schaffer AA, Rathinam C, Boztug K, Schwitzer B, Rezaei N, Bohn G, Melin M, Carlsson G, Fadeel B, Dahl N, Palmblad J, Henter JI, Zeidler C, Grimbacher B, Welte K.

Nature Genetics 2007 Jan; 39(1):86.

Application: WB, Human, EBV B cell lines SCN-I, SCN-II, SCN-III

- [Evidence that HAX-1 is an interleukin-1 alpha N-terminal binding protein.](#)

Yin H, Morioka H, Towle CA, Vidal M, Watanabe T, Weissbach L.

Cytokine 2001 Aug; 15(3):122.

Application: WB-Re, WB-Tr, Human, HEK 293 cells, Recombinant protein

Disease

- [Myelodysplastic Syndromes](#)