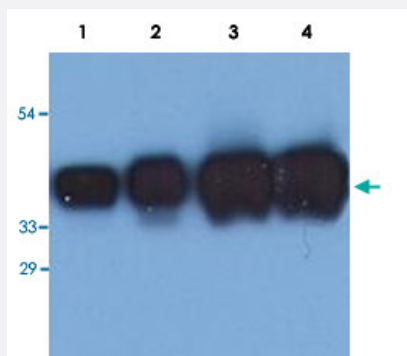


# KRT19 monoclonal antibody, clone A53-B/A2 (Biotin)

Catalog # MAB6502      Size 100 ug

## Applications



### Western Blot (Cell lysate)

Western Blotting analysis (reducing conditions) of whole cell lysate of MCF-7 (human breast adenocarcinoma cell line).

Lane 1, 2 : Immunostaining with KRT19 monoclonal antibody, clone BA-17 (Cat # MAB0861).

Lane 3, 4 : Immunostaining with KRT19 monoclonal antibody, clone A53-B/A2 (Cat # MAB0862).

## Specification

<b>Product Description</b>	Mouse monoclonal antibody raised against native KRT19.
<b>Immunogen</b>	Native purified KRT19 from human breast adenocarcinoma cell line (MCF-7).
<b>Host</b>	Mouse
<b>Theoretical MW (kDa)</b>	40
<b>Reactivity</b>	Human
<b>Specificity</b>	This antibody reacts with Rod domain of cytokeratin 19 (40 KDa) in human tissue. Cytokeratin 19 is not expressed in hepatocytes; it is often co-expressed with cytokeratin 7.
<b>Form</b>	Liquid
<b>Conjugation</b>	Biotin
<b>Concentration</b>	1 mg/mL
<b>Isotype</b>	IgG2a

**Quality Control Testing**

This product contains sodium azide: a POISONOUS AND HAZARDOUS SUBSTANCE which should be handled by trained staff only.

**Recommend Usage**

The optimal working dilution should be determined by the end user.

**Storage Buffer**

In PBS, pH 7.4 (0.09% sodium azide).

**Storage Instruction**

Store at 4°C. Do not freeze.

## Applications

- Western Blot (Cell lysate)

Western Blotting analysis (reducing conditions) of whole cell lysate of MCF-7 (human breast adenocarcinoma cell line).

Lane 1, 2 : Immunostaining with KRT19 monoclonal antibody, clone BA-17 (Cat # MAB0861).

Lane 3, 4 : Immunostaining with KRT19 monoclonal antibody, clone A53-B/A2 (Cat # MAB0862).

- Immunohistochemistry (Formalin/PFA-fixed paraffin-embedded sections)

- Immunocytochemistry

- Immunoprecipitation

- Enzyme-linked Immunoabsorbent Assay

- Flow Cytometry

## Gene Info — KRT19

**Entrez GeneID**[3880](#)**Gene Name**

KRT19

**Gene Alias**

CK19, K19, K1CS, MGC15366

**Gene Description**

keratin 19

**Omim ID**[148020](#)**Gene Ontology**[Hyperlink](#)

**Gene Summary**

The protein encoded by this gene is a member of the keratin family. The keratins are intermediate filament proteins responsible for the structural integrity of epithelial cells and are subdivided into cytokeratins and hair keratins. The type I cytokeratins consist of acidic proteins which are arranged in pairs of heterotypic keratin chains. Unlike its related family members, this smallest known acidic cytokeratin is not paired with a basic cytokeratin in epithelial cells. It is specifically expressed in the periderm, the transiently superficial layer that envelopes the developing epidermis. The type I cytokeratins are clustered in a region of chromosome 17q12-q21. [provided by RefSeq]

**Other Designations**

40-kDa keratin intermediate filament|cytokeratin 19|keratin, type I cytoskeletal 19|keratin, type I, 40-kd

**Disease**

- [Liver Cirrhosis](#)