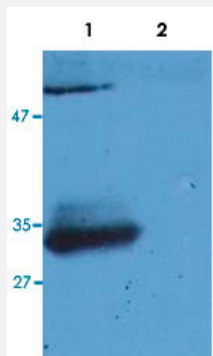


IgG (Fab) monoclonal antibody, clone 4A11 (PE)

Catalog # MAB6479

Size 100 ug

Applications



Western Blot (Recombinant protein)

Western Blotting analysis (reducing conditions) of human IgG Fab fragment using IgG monoclonal antibody, clone 4A11 (Cat # MAB6440).

Lane 1 : Normal human immunoglobulins.

Lane 2 : Normal bovine immunoglobulins.

Specification

Product Description Mouse monoclonal antibody raised against IgG (Fab).

Immunogen Human IgG (Fab).

Host Mouse

Reactivity Human

Specificity This antibody reacts with Fab fragment of human IgG.

Form Liquid

Conjugation PE

Concentration 0.1 mg/mL

Isotype IgG2b

Recommend Usage Flow Cytometry (6 ug/mL)
The optimal working dilution should be determined by the end user.

Storage Buffer In PBS (0.2% BSA, 0.09% sodium azide)

Storage Instruction

Store in the dark at 4°C. Do not freeze.
Avoid prolonged exposure to light.
Aliquot to avoid repeated freezing and thawing.

Note

This product contains sodium azide: a POISONOUS AND HAZARDOUS SUBSTANCE which should be handled by trained staff only.

Applications

- Western Blot (Recombinant protein)

Western Blotting analysis (reducing conditions) of human IgG Fab fragment using IgG monoclonal antibody, clone 4A11 (Cat # MAB6440).

Lane 1 : Normal human immunoglobulins.

Lane 2 : Normal bovine immunoglobulins.

- Flow Cytometry

Publication Reference

- [T cell-dependent differentiation of human B cells into IgM, IgG, IgA, or IgE plasma cells: high rate of antibody production by IgE plasma cells, but limited clonal expansion of IgE precursors.](#)

Brinkmann V, Heusser CH.

Cellular Immunology 1993 Dec; 152(2):323.

- [Serological abnormalities in juvenile chronic arthritis: a review of 46 cases.](#)

Balogh Z, Meretey K, Falus A, Bozsoky S.

Annals of the Rheumatic Diseases 1980 Apr; 39(2):129.

- [Serum immunoglobulins after surgical operation.](#)

Fuller JM, Keyser JW.

Clinical Chemistry 1975 May; 21(6):667.