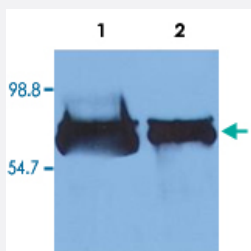


ALB monoclonal antibody, clone AL-01 (Biotin)

Catalog # MAB6469 Size 100 ug

Applications



Western Blot (Tissue lysate)

Western Blotting analysis (reducing conditions) of human serum albumin using ALB monoclonal antibody, clone AL-01.

Lane 1 : Human blood plasma.

Lane 2 : Human blood serum.

Specification

Product Description	Mouse monoclonal antibody raised against native ALB.
Immunogen	Native purified ALB from human serum.
Host	Mouse
Reactivity	Human
Specificity	This antibody reacts only with human serum albumin, a 65-67 KDa monomeric protein in human blood plasma; it is produced in liver. No cross-reactivity was observed with other serum proteins.
Form	Liquid
Conjugation	Biotin
Concentration	1 mg/mL
Isotype	IgG1
Recommend Usage	Western Blot (0.5 ug/mL) The optimal working dilution should be determined by the end user.
Storage Buffer	In PBS, pH 7.4 (0.09% sodium azide)

Storage Instruction

Store in the dark at 4°C. Do not freeze.
Avoid prolonged exposure to light.
Aliquot to avoid repeated freezing and thawing.

Note

This product contains sodium azide: a POISONOUS AND HAZARDOUS SUBSTANCE which should be handled by trained staff only.

Applications

- Western Blot (Tissue lysate)

Western Blotting analysis (reducing conditions) of human serum albumin using ALB monoclonal antibody, clone AL-01.
Lane 1 : Human blood plasma.
Lane 2 : Human blood serum.

Gene Info — ALB

Entrez GeneID[213](#)**Gene Name**

ALB

Gene Alias

DKFZp779N1935, PRO0883, PRO0903, PRO1341

Gene Description

albumin

Omim ID[103600 194470](#)**Gene Ontology**[Hyperlink](#)**Gene Summary**

Albumin is a soluble, monomeric protein which comprises about one-half of the blood serum protein. Albumin functions primarily as a carrier protein for steroids, fatty acids, and thyroid hormones and plays a role in stabilizing extracellular fluid volume. Albumin is a globular unglycosylated serum protein of molecular weight 65,000. Albumin is synthesized in the liver as preproalbumin which has an N-terminal peptide that is removed before the nascent protein is released from the rough endoplasmic reticulum. The product, proalbumin, is in turn cleaved in the Golgi vesicles to produce the secreted albumin. [provided by RefSeq]

Other Designations

cell growth inhibiting protein 42|growth-inhibiting protein 20|serum albumin

Publication Reference

- [The characteristics of monoclonal antibodies against human albumin.](#)

Angelisova P, Macku B, Mancal P, Bartek J, Viklicky V.

Folia Biol (Praha) 1986 Jan; 32(5):289.

Disease

- [Alzheimer disease](#)
- [Diabetes Mellitus](#)
- [Hepatitis](#)