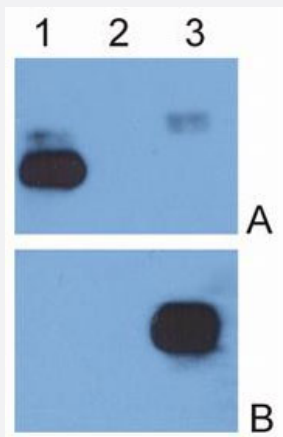


# IgG (Fc) monoclonal antibody, clone EM-07

Catalog # MAB6465      Size 100 ug

## Applications



### Western Blot (Tissue lysate)

IgG, kappa light chain (Lane 1), IgG lambda light chain (Lane 2) and IgG Fc fragment (Lane 3) purified from human serum were analysed by Western blotting with Kappa light chains monoclonal antibody, clone MEM-09 (Cat # MAB6445) (Panel A) and IgG (Fc) monoclonal antibody, clone EM-07 (Cat # MAB6465) (Panel B).

## Specification

Product Description	Mouse monoclonal antibody raised against IgG (Fc).
Immunogen	Fusion protein of human IgG Fc fragment.
Host	Mouse
Reactivity	Human
Specificity	This antibody reacts with Fc part of human IgG heavy chain and with isolated Fc fragments.
Form	Liquid
Isotype	IgG1
Recommend Usage	Flow Cytometry (1-4 ug/mL) Western Blot The optimal working dilution should be determined by the end user.
Storage Buffer	In PBS, pH 7.4 (0.09% sodium azide)

**Storage Instruction**

Store at 4°C. Do not freeze.  
Aliquot to avoid repeated freezing and thawing.

**Note**

This product contains sodium azide: a POISONOUS AND HAZARDOUS SUBSTANCE which should be handled by trained staff only.

## Applications

- Western Blot (Tissue lysate)

IgG, kappa light chain (Lane 1), IgG lambda light chain (Lane 2) and IgG Fc fragment (Lane 3) purified from human serum were analysed by Western blotting with Kappa light chains monoclonal antibody, clone MEM-09 (Cat # MAB6445) (Panel A) and IgG (Fc) monoclonal antibody, clone EM-07 (Cat # MAB6465) (Panel B).

- Immunocytochemistry

- Enzyme-linked Immunoabsorbent Assay

## Publication Reference

- [T cell-dependent differentiation of human B cells into IgM, IgG, IgA, or IgE plasma cells: high rate of antibody production by IgE plasma cells, but limited clonal expansion of IgE precursors.](#)

Brinkmann V, Heusser CH.

Cellular Immunology 1993 Dec; 152(2):323.

- [Serological abnormalities in juvenile chronic arthritis: a review of 46 cases.](#)

Balogh Z, Meretey K, Falus A, Bozsoky S.

Annals of the Rheumatic Diseases 1980 Apr; 39(2):129.

- [Serum immunoglobulins after surgical operation.](#)

Fuller JM, Keyser JW.

Clinical Chemistry 1975 May; 21(6):667.