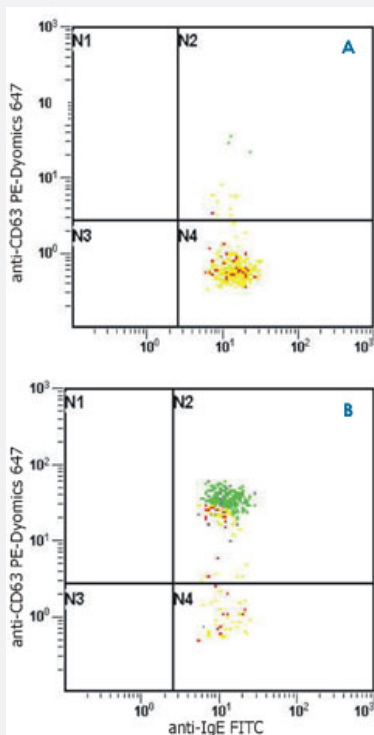


IgE monoclonal antibody, clone BE5

Catalog # MAB6464 Size 100 ug

Applications



Flow Cytometry

Flow cytometric analysis of basophil activation upon stimulation of normal (heparin-treated) whole blood with combination of IL-3 and IgE monoclonal antibody, clone BE5 (Cat # MAB6464).

Combination of anti-human IgE (BE5) FITC and CD63 monoclonal antibody, clone MEM-259 (PE-Dyomics 647) (Cat # MAB4459) was used (analysis in basophil wIDO1w).

A - staining of non-stimulated (control) sample.

B - staining of IgE stimulated sample.

Specification

Product Description Mouse monoclonal antibody raised against IgE.

Immunogen Human IgE.

Host Mouse

Reactivity Human

Specificity This antibody reacts with human IgE.

Form Liquid

Isotype	IgG1
Recommend Usage	ELISA Flow Cytometry (5 ug/mL) The optimal working dilution should be determined by the end user.
Storage Buffer	In TBS, pH 8.0 (0.09% sodium azide)
Storage Instruction	Store at 4°C. Do not freeze. Aliquot to avoid repeated freezing and thawing.
Note	This product contains sodium azide: a POISONOUS AND HAZARDOUS SUBSTANCE which should be handled by trained staff only.

Applications

- Enzyme-linked Immunoabsorbent Assay
- Flow Cytometry

Flow cytometric analysis of basophil activation upon stimulation of normal (heparin-treated) whole blood with combination of IL-3 and IgE monoclonal antibody, clone BE5 (Cat # MAB6464).

Combination of anti-human IgE (BE5) FITC and CD63 monoclonal antibody, clone MEM-259 (PE-Dyomics 647) (Cat # MAB4459) was used (analysis in basophil wIDO1w).

A - staining of non-stimulated (control) sample.

B - staining of IgE stimulated sample.

Publication Reference

- [IgE isotype determination: epsilon-germline gene transcription, DNA recombination and B-cell differentiation.](#)

H J Gould, R L Beavil, D Vercelli.

British Medical Bulletin 2000 Jan; 56(4):908.

Application: ELISA, Human, Human plasma

- [T cell-dependent differentiation of human B cells into IgM, IgG, IgA, or IgE plasma cells: high rate of antibody production by IgE plasma cells, but limited clonal expansion of IgE precursors.](#)

Brinkmann V, Heusser CH.

Cellular Immunology 1993 Dec; 152(2):323.

Application: ELISA, Human, Human B cells

- [Serological abnormalities in juvenile chronic arthritis: a review of 46 cases.](#)

Balogh Z, Meretey K, Falus A, Bozsoky S.

Annals of the Rheumatic Diseases 1980 Apr; 39(2):129.