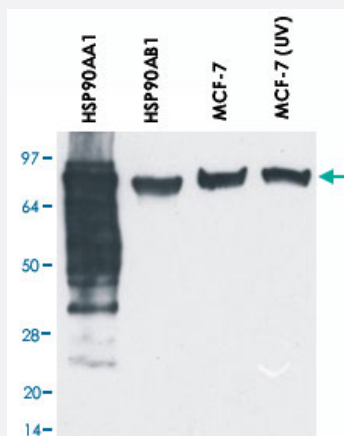


# HSP90AA1/HSP90AB1 monoclonal antibody, clone MBH90AB

Catalog # MAB6457

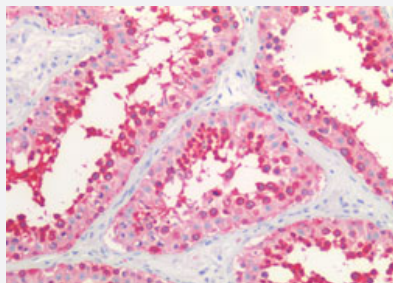
Size 100 ug

## Applications



### Western Blot

Western blotting analysis of HSP90AA1 and HSP90AB1 protein by HSP90AA1/HSP90AB1 monoclonal antibody, clone MBH90AB (Cat # MAB6457).



### Immunohistochemistry (Formalin/PFA-fixed paraffin-embedded sections)

Immunohistochemistry staining of human testis.

## Specification

<b>Product Description</b>	Mouse monoclonal antibody raised against synthetic peptide of HSP90AA1 and HSP90AB1.
<b>Immunogen</b>	A synthetic peptide corresponding to amino acids at N-terminus of human HSP90AA1/HSP90AB1.
<b>Sequence</b>	EEVHHGEEEEVEC
<b>Host</b>	Mouse
<b>Reactivity</b>	Bovine, Human, Mouse

<b>Specificity</b>	This antibody recognizes the epitope EEEVE within N-terminal part of ubiquitously expressed Hsp90a and Hsp90b proteins with calculated MW of 84.7 KDa and 83.3 KDa, respectively, however, migrating as 90 KDa bands under reducing SDS-PAGE conditions.
<b>Form</b>	Liquid
<b>Isotype</b>	IgG1
<b>Recommend Usage</b>	Western Blot (1 ug/mL) Immunohistochemistry (Formalin/PFA-fixed paraffin-embedded sections) The optimal working dilution should be determined by the end user.
<b>Storage Buffer</b>	In PBS (0.2% BSA, 0.09% sodium azide)
<b>Storage Instruction</b>	Store at 4°C. Do not freeze. Aliquot to avoid repeated freezing and thawing.
<b>Note</b>	This product contains sodium azide: a POISONOUS AND HAZARDOUS SUBSTANCE which should be handled by trained staff only.

## Applications

- Western Blot

Western blotting analysis of HSP90AA1 and HSP90AB1 protein by HSP90AA1/HSP90AB1 monoclonal antibody, clone MBH90AB (Cat # MAB6457).

- Immunohistochemistry (Formalin/PFA-fixed paraffin-embedded sections)

Immunohistochemistry staining of human testis.

## Publication Reference

- [Large-scale, in-cell photocrosslinking at single-residue resolution reveals the molecular basis for glucocorticoid receptor regulation by immunophilins.](#)

Asat Baischew, Sarah Engel, Martha C Taubert, Thomas M Geiger, Felix Hausch.

Nature Structural & Molecular Biology 2023 Dec; 30(12):1857.

Application: WB, Human, HEK293 cells

- [The Hsp90 molecular chaperone: an open and shut case for treatment.](#)

Pearl LH, Prodromou C, Workman P.

The Biochemical Journal 2008 Mar; 410(3):439.

- [Expressed as the sole Hsp90 of yeast, the alpha and beta isoforms of human Hsp90 differ with regard to their capacities for activation of certain client proteins, whereas only Hsp90beta generates sensitivity to the Hsp90 inhibitor radicicol.](#)

Millson SH, Truman AW, Racz A, Hu B, Panaretou B, Nuttall J, Mollapour M, Soti C, Piper PW.

The FEBS Journal 2007 Sep; 274(17):4453.

Application: WB, Yeast, Yeast

- [Blind cavefish and heat shock protein chaperones: a novel role for hsp90alpha in lens apoptosis.](#)

Hooven TA, Yamamoto Y, Jeffery WR.

The International Journal of Developmental Biology 2004 Oct; 48(8-9):731.