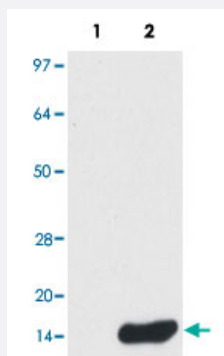


AGR3 monoclonal antibody, clone AGR3.1

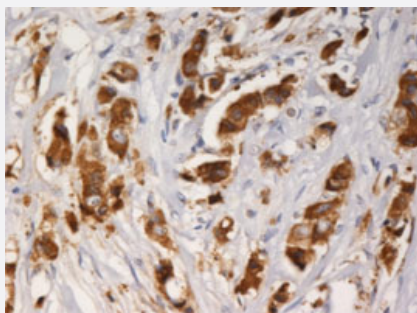
Catalog # MAB6455 Size 100 ug

Applications



Western Blot (Cell lysate)

Western blotting analysis of AGR3 protein by AGR3 monoclonal antibody, clone AGR3.1 (Cat # MAB6455) in H1229 (human lung carcinoma cell line, lane 1) compared to T-47D (human breast cancer cell line, lane 2).



Immunohistochemistry (Formalin/PFA-fixed paraffin-embedded sections)

Immunohistochemistry staining of AGR3 with AGR3 monoclonal antibody, clone AGR3.1 (Cat # MAB6455) in paraffin-embedded sections of human breast carcinoma.

Specification

Product Description	Mouse monoclonal antibody raised against AGR3.
Immunogen	Purified human AGR3 protein.
Host	Mouse
Theoretical MW (kDa)	19-20
Reactivity	Human
Specificity	This antibody recognizes the epitope HETTDKNLS within the AGR3 (AG3) protein (19-20 KDa); a secreted cytoplasmic protein which can serve as a marker of carcinogenesis.

Form	Liquid
Isotype	IgG1
Recommend Usage	Western Blot (1 ug/mL) Immunocytochemistry (1 ug/mL) Immunohistochemistry (1 ug/mL) The optimal working dilution should be determined by the end user.
Storage Buffer	In PBS (0.2% BSA, 0.09% sodium azide)
Storage Instruction	Store at 4°C. Do not freeze. Aliquot to avoid repeated freezing and thawing.
Note	This product contains sodium azide: a POISONOUS AND HAZARDOUS SUBSTANCE which should be handled by trained staff only.

Applications

- Western Blot (Cell lysate)

Western blotting analysis of AGR3 protein by AGR3 monoclonal antibody, clone AGR3.1 (Cat # MAB6455) in H1229 (human lung carcinoma cell line, lane 1) compared to T-47D (human breast cancer cell line, lane 2).

- Immunohistochemistry (Formalin/PFA-fixed paraffin-embedded sections)

Immunohistochemistry staining of AGR3 with AGR3 monoclonal antibody, clone AGR3.1 (Cat # MAB6455) in paraffin-embedded sections of human breast carcinoma.

Gene Info — AGR3

Entrez GeneID	155465
Gene Name	AGR3
Gene Alias	AG3, BCMP11, HAG3, hAG-3
Gene Description	anterior gradient homolog 3 (Xenopus laevis)
Omim ID	609482
Gene Ontology	Hyperlink
Other Designations	OTTHUMP00000158512 anterior gradient protein 3 breast cancer membrane protein 11

Publication Reference

- [Stromal expression of hemopexin is associated with lymph-node metastasis in pancreatic ductal adenocarcinoma.](#)

Yukie Suzuki, Tatsuyuki Takadate, Masamichi Mizuma, Hiroki Shima, Takashi Suzuki, Tomoyoshi Tachibana, Mitsuhiro Shimura, Tatsuo Hata, Masahiro Iseki, Kei Kawaguchi, Takeshi Aoki, Hiroki Hayashi, Takanori Morikawa, Kei Nakagawa, Fuyuhiko Motoi, Takeshi Naitoh, Kazuhiko Igarashi, Michiaki Unno.

PLoS One 2020 Jul; 15(7):e0235904.

Application: IHC-P, Human, Human pancreatic ductal adenocarcinoma

- [Diversity of the protein disulfide isomerase family: identification of breast tumor induced Hag2 and Hag3 as novel members of the protein family.](#)

Persson S, Rosenquist M, Knobloch B, Khosravi-Far R, Sommarin M, Michalak M.

Molecular Phylogenetics and Evolution 2005 Sep; 36(3):734.

Application: NB, Human, Heart, Brain, Placenta, Lung, Liver, Skeletal muscle, Kidney, Pancreas

- [hAG-2 and hAG-3, human homologues of genes involved in differentiation, are associated with oestrogen receptor-positive breast tumours and interact with metastasis gene C4.4a and dystroglycan.](#)

Fletcher GC, Patel S, Tyson K, Adam PJ, Schenker M, Loader JA, Daviet L, Legrain P, Parekh R, Harris AL, Terrett JA.

British Journal of Cancer 2003 Feb; 88(4):579.