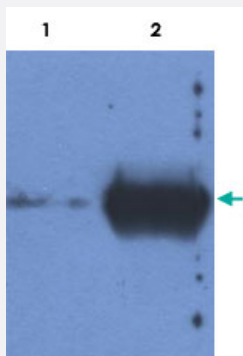


IgG monoclonal antibody, clone IVA285-1

Catalog # MAB6442 Size 100 ug

Applications



Western Blot (Tissue lysate)

Detection of IgG light chain in reduced samples of fetal calf serum (Lane 1) and bovine serum (Lane 2) by IgG monoclonal antibody, clone IVA285-1 (Cat # MAB6442). This antibody is a suitable tool for in-house quality controls of fetal calf serum (hybridoma cell culture grade).

Specification

Product Description	Mouse monoclonal antibody raised against IgG.
Immunogen	Bovine IgG, light chain.
Host	Mouse
Reactivity	Bovine
Specificity	This antibody reacts with bovine IgG (light chains).
Form	Liquid
Isotype	IgG1
Recommend Usage	Flow Cytometry Immunohistochemistry Western Blot (0.5-1 ug/mL) The optimal working dilution should be determined by the end user.
Storage Buffer	In PBS, pH 7.4 (0.09% sodium azide)

Storage Instruction

Store at 4°C. Do not freeze.
Aliquot to avoid repeated freezing and thawing.

Note

This product contains sodium azide: a POISONOUS AND HAZARDOUS SUBSTANCE which should be handled by trained staff only.

Applications

- Western Blot (Tissue lysate)

Detection of IgG light chain in reduced samples of fetal calf serum (Lane 1) and bovine serum (Lane 2) by IgG monoclonal antibody, clone IVA285-1 (Cat # MAB6442). This antibody is a suitable tool for in-house quality controls of fetal calf serum (hybridoma cell culture grade).

- Immunohistochemistry (Frozen sections)

- Flow Cytometry

Publication Reference

- [Monoclonal antibody to the light chain of bovine immunoglobulin.](#)

Antalikova J, Simon M, Jankovicova J, Horovska L, Dusinsky R, Hluchy S.

Hybridoma (2005) 2006 Oct; 25(5):309.

Application: ELISA, Flow Cyt, IHC-Fr, WB, Bovine, Kidney, Mammary gland teat cistern, Recombinant protein, Spleen