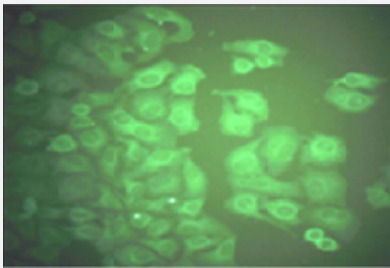


CA 50 monoclonal antibody, clone 93

Catalog # MAB6355

Size 500 ug

Applications



Immunofluorescence

Staining of methanol-fixed Hela cells by Immunocytochemistry. CA 50 monoclonal antibody, clone 93 was used at 10 ug/mL.

Specification

Product Description	Mouse monoclonal antibody raised against CA 50 (cancer antigen 50).
Immunogen	Human CA 50 protein.
Host	Mouse
Reactivity	Human
Specificity	This antibody reacts with human CA 50.
Form	Lyophilized
Purification	Protein G affinity purification
Isotype	IgG3, kappa
Recommend Usage	ELISA (The antibody, when used at 0.2 ng/mL or higher concentration, can react with 1 ug/mL CA50 coated ELISA plate wells.) Immunofluorescence The optimal working dilution should be determined by the end user.
Storage Buffer	Lyophilized from 10 mM PBS, pH 7.2.

Storage Instruction

Store at -20°C.

Aliquot after reconstitution to avoid repeated freezing and thawing.

Double distilled water is recommended to reconstitute the antibody.

Applications

- Immunofluorescence

Staining of methanol-fixed Hela cells by Immunocytochemistry. CA 50 monoclonal antibody, clone 93 was used at 10 ug/mL.

- Enzyme-linked Immunoabsorbent Assay