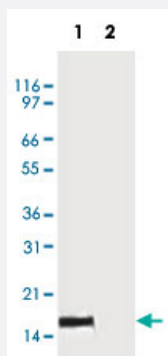


Cyts monoclonal antibody, clone 6H2.B4

Catalog # MAB6240

Size 100 ug

Applications



Immunoprecipitation

Detection of Cyts in HeLa cells.

Two micrograms of 6H2.B4 (Lane 1) or control IgG (Lane 2) was used to immunoprecipitate Cyts from 1×10^6 cells and the immunoprecipitated protein was resolved on SDS-PAGE.

Cyts was detected by WB using Cyts monoclonal antibody, clone 6H2.B4 (Cat #MAB6240, 2 ug/mL).

Specification

Product Description	Mouse monoclonal antibody raised against Cyts.
Immunogen	Rat Cyts.
Host	Mouse
Reactivity	Human, Mouse, Rat
Specificity	Clone 6H2.B4 (IMG-102A) recognizes the native form of Cytochrome c (Goshorn et al. 1991). Native cytochrome c has an approximate molecular weight of 15 KDa. Clone 6H2. B4 does not appear to recognize the denatured form of Cytochrome c. This antibody recognizes an epitope around residue 62 of rat Cytochrome c, based on copetitive ELISA results (Goshorn et al. 1991).
Form	Liquid
Isotype	IgG1, kappa
Recommend Usage	Immunoprecipitation (2 ug/ 10^6 cells) Immunohistochemistry (Frozen sections) (2-4 ug/mL) The optimal working dilution should be determined by the end user.
Storage Buffer	In PBS (0.2% gelatin, 0.05% sodium azide)

Storage Instruction

Store at 4°C. For long term storage store at -20°C.
Aliquot to avoid repeated freezing and thawing.

Note

This product contains sodium azide: a POISONOUS AND HAZARDOUS SUBSTANCE which should be handled by trained staff only.

Applications

- Immunohistochemistry (Frozen sections)

- Immunoprecipitation

Detection of Cycs in HeLa cells.

Two micrograms of 6H2.B4 (Lane 1) or control IgG (Lane 2) was used to immunoprecipitate Cycs from 1×10^6 cells and the immunoprecipitated protein was resolved on SDS-PAGE.

Cycs was detected by WB using Cycs monoclonal antibody, clone 6H2.B4 (Cat #MAB6240, 2 ug/mL).

Gene Info — Cycs

Entrez GeneID [25309](#)

Gene Name Cycs

Gene Alias CYCSA, MGC93634

Gene Description cytochrome c, somatic

Gene Ontology [Hyperlink](#)

Gene Summary O

Other Designations Cytochrome C, expressed in somatic tissues

Publication Reference

- [Apaf-1, a human protein homologous to C. elegans CED-4, participates in cytochrome c-dependent activation of caspase-3.](#)

Zou H, Henzel WJ, Liu X, Lutschg A, Wang X.

Cell 1997 Aug; 90(3):405.

Application: WB-Tr, Human, HEK 293 cells

- [Induction of apoptotic program in cell-free extracts: requirement for dATP and cytochrome c.](#)

Liu X, Kim CN, Yang J, Jemmerson R, Wang X.

Cell 1996 Jul; 86(1):147.

Application: Immunodepletion, Human, HeLa S-100 cells

- [CPP32, a novel human apoptotic protein with homology to Caenorhabditis elegans cell death protein Ced-3 and mammalian interleukin-1 beta-converting enzyme.](#)

Fernandes-Alnemri T, Litwack G, Alnemri ES.

The Journal of Biological Chemistry 1994 Dec; 269(49):30761.