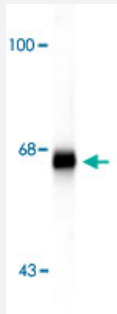


Ina monoclonal antibody, clone ID2

Catalog # MAB6233

Size 100 uL

Applications



Western Blot (Tissue lysate)

Western blot of rat cortex lysate showing specific immunolabeling of the ~ 66k Ina protein.

Specification

Product Description	Mouse monoclonal antibody raised against recombinant Ina.
Immunogen	Recombinant protein corresponding to rat Ina.
Host	Mouse
Theoretical MW (kDa)	66
Reactivity	Rat
Form	Liquid
Isotype	IgG1
Recommend Usage	Western Blot (1:2000) Immunofluorescence (1:250) Immunohistochemistry (1:1000) The optimal working dilution should be determined by the end user.
Storage Buffer	In culture supernatant (10 mM sodium azide)
Storage Instruction	Store at -20°C. Aliquot to avoid repeated freezing and thawing.

Note

This product contains sodium azide: a POISONOUS AND HAZARDOUS SUBSTANCE which should be handled by trained staff only.

Applications

- Western Blot (Tissue lysate)

Western blot of rat cortex lysate showing specific immunolabeling of the ~ 66k Ina protein.

- Immunohistochemistry
- Immunofluorescence

Gene Info — Ina

Entrez GeneID	24503
---------------	-----------------------

Protein Accession#	P23565
--------------------	------------------------

Gene Name	Ina
-----------	-----

Gene Alias	Inexa, Intlaa, Nf66
------------	---------------------

Gene Description	internexin neuronal intermediate filament protein, alpha
------------------	--

Gene Ontology	Hyperlink
---------------	---------------------------

Gene Summary	O
--------------	---

Other Designations	internexin, alpha
--------------------	-------------------