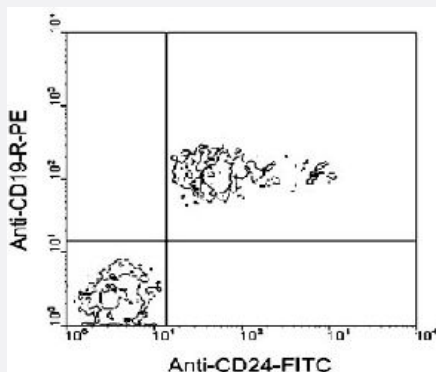


Cd24a monoclonal antibody, clone 30-F1

Catalog # MAB6214 Size 500 ug

Applications



Flow Cytometry

BALB/c spleen cells were double-stained with Cd24a monoclonal antibody, clone 30-F1 (FITC) and Cd19 monoclonal antibody, clone 6D5 (PE) (Cat # MAB5689), following which small lymphocytes were gated and analyzed on a FACScan™ flow cytometer (BDIS, San Jose, CA).

Specification

Product Description	Rat monoclonal antibody raised against native Cd24a.
Immunogen	Native purified from mouse thymocytes or splenocytes.
Host	Rat
Reactivity	Mouse
Specificity	Mouse CD24/heat stable antigen (HSA).
Form	Liquid
Isotype	IgG2c
Recommend Usage	The optimal working dilution should be determined by the end user.
Storage Buffer	In 100 mM BBS, pH 8.2
Storage Instruction	Store at 4°C.

Applications

- Immunoprecipitation

- Flow Cytometry

BALB/c spleen cells were double-stained with Cd24a monoclonal antibody, clone 30-F1 (FITC) and Cd19 monoclonal antibody, clone 6D5 (PE) (Cat # MAB5689), following which small lymphocytes were gated and analyzed on a FACScan™ flow cytometer (BDIS, San Jose, CA).

Gene Info — Cd24a

Entrez GeneID [12484](#)

Gene Name Cd24a

Gene Alias HSA, Ly-52, nectadrin

Gene Description CD24a antigen

Gene Ontology [Hyperlink](#)

Other Designations cluster of differentiation 24|heat stable antigen

Publication Reference

- [Heat-stable antigen/CD24 on mouse T lymphocytes: evidence for a costimulatory function.](#)

Hubbe M, Altevogt P.

European Journal of Immunology 1994 Mar; 24(3):731.

- [Signal transduction in lymphocytic and myeloid cells via CD24, a new member of phosphoinositol-anchored membrane molecules.](#)

Fischer GF, Majdic O, Gadd S, Knapp W.

Journal of Immunology 1990 Jan; 144(2):638.

Application: Flow Cyt, Func, Human, Human B lymphocytes, Human granulocytes