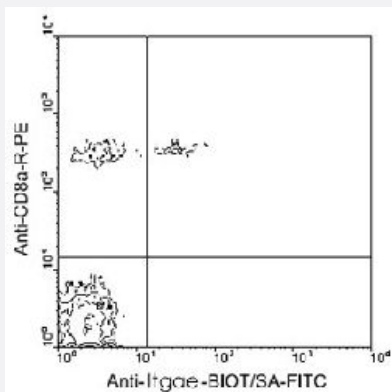


Itgae monoclonal antibody, clone 2E7

Catalog # MAB6213 Size 500 ug

Applications



Flow Cytometry

BALB/c mesenteric lymph node cells were first labeled with Itgae monoclonal antibody, clone 2E7 (Biotin), and then double-stained with streptavidin-FITC and Cd8a monoclonal antibody, clone 53-6.7 (PE) (Cat # MAB6107). Small lymphocytes were gated and analyzed on a FACScan™ flow cytometer (BDIS, San Jose, CA).

Specification

Product Description	Hamster monoclonal antibody raised against native Itgae.
Immunogen	Native purified from mouse intestinal intraepithelial lymphocytes.
Host	Hamster
Reactivity	Mouse
Specificity	The CD103/alphaIELbeta7 integrin complex (Mr 160 and 115 KDa peptides).
Form	Liquid
Isotype	IgG
Recommend Usage	The optimal working dilution should be determined by the end user.
Storage Buffer	In 100 mM BBS, pH 8.2
Storage Instruction	Store at 4°C.

Applications

- Immunohistochemistry (Frozen sections)
- Immunoprecipitation
- Flow Cytometry

BALB/c mesenteric lymph node cells were first labeled with Itgae monoclonal antibody, clone 2E7 (Biotin), and then double-stained with streptavidin-FITC and Cd8a monoclonal antibody, clone 53-6.7 (PE) (Cat # MAB6107). Small lymphocytes were gated and analyzed on a FACScan™ flow cytometer (BDIS, San Jose, CA).

Gene Info — Itgae

Entrez GeneID [16407](#)

Gene Name Itgae

Gene Alias A530055J10, CD103, MGC183601, aM290, alpha-E1, alpha-M290

Gene Description integrin alpha E, epithelial-associated

Gene Ontology [Hyperlink](#)

Gene Summary O

Other Designations OTTMUSP00000006421|OTTMUSP00000006422|integrin alpha-E

Publication Reference

- [Co-expression of CD8 alpha in CD4+ T cell receptor alpha beta + T cells migrating into the murine small intestine epithelial layer.](#)

Reimann J, Rudolphi A.

European Journal of Immunology 1995 Jun; 25(6):1508.

Application: Flow Cyt, Mouse, Mouse T cells

- [Developmental expression of the alpha IEL beta 7 integrin on T cell receptor gamma delta and T cell receptor alpha beta T cells.](#)

Lefrancois L, Barrett TA, Havran WL, Puddington L.

European Journal of Immunology 1994 Mar; 24(3):635.

Application: Flow Cyt, Mouse, Thymocyte

- [The mucosal T cell integrin alpha M290 beta 7 recognizes a ligand on mucosal epithelial cell lines.](#)

Roberts K, Kilshaw PJ.

European Journal of Immunology 1993 Jul; 23(7):1630.

Application: Cytotoxicity, Mouse, CMT93 cells