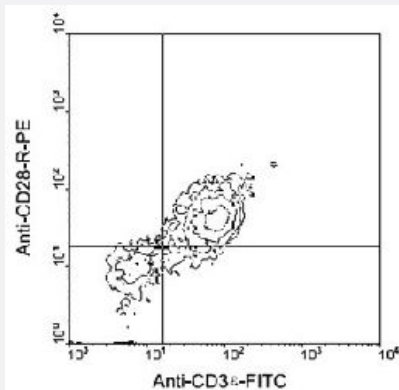


Cd28 monoclonal antibody, clone 37.51

Catalog # MAB6206 Size 500 ug

Applications



Flow Cytometry

BALB/c thymocytes were double-stained with Cd28 monoclonal antibody, clone 37.51 (PE) and hamster anti-mouse CD3E-FITC. All cells were then gated and analyzed by two-color flow cytometry on a FACScan™ flow cytometer (BDIS, San Jose, CA).

Specification

Product Description	Hamster monoclonal antibody raised against Cd28.
Immunogen	C57BL/6 mouse T-cell lymphoma EL-4.
Host	Hamster
Reactivity	Mouse
Specificity	CD28 costimulatory receptor, Mr 40 KDa.
Form	Liquid
Isotype	IgG
Recommend Usage	The optimal working dilution should be determined by the end user.
Storage Buffer	In 100 mM BBS, pH 8.2
Storage Instruction	Store at 4°C.

Applications

- Immunoprecipitation

- Flow Cytometry

BALB/c thymocytes were double-stained with Cd28 monoclonal antibody, clone 37.51 (PE) and hamster anti-mouse CD3E-FITC. All cells were then gated and analyzed by two-color flow cytometry on a FACScan™ flow cytometer (BDIS, San Jose, CA).

Gene Info — Cd28

Entrez GeneID	12487
---------------	-----------------------

Gene Name	Cd28
-----------	------

Gene Alias	-
------------	---

Gene Description	CD28 antigen
------------------	--------------

Gene Ontology	Hyperlink
---------------	---------------------------

Other Designations	OTTMUSP00000002157
--------------------	--------------------

Publication Reference

- [The cell-surface 5'-nucleotidase CD73 defines a functional T memory cell subset that declines with age.](#)

Fengqin Fang, Wenqiang Cao, Weikang Zhu, Nora Lam, Lingjie Li, Sadhana Gaddam, Yong Wang, Chulwoo Kim, Simon Lambert, Huimin Zhang, Bin Hu, Donna L Farber, Cornelia M Weyand, Jörg J Goronzy.

Cell Reports 2021 Nov; 37(6):109981.

Application: Stimulation, mouse, Mouse splenocyte

- [Differential requirement of CD28 costimulation for activation of murine CD8+ intestinal intraepithelial lymphocyte subsets and lymph node cells.](#)

Gelfanov V, Lai YG, Gelfanova V, Dong JY, Su JP, Liao NS.

Journal of Immunology 1995 Jul; 155(1):76.

Application: Func, Mouse, Intraepithelial lymphocytes, Lymph node cells

- [New perspectives of CD28-B7-mediated T cell costimulation.](#)

Bluestone JA.

Immunity 1995 Jun; 2(6):555.

Application: Flow Cyt, IA, Human, Mouse, T cells

- [CD28-mediated signalling co-stimulates murine T cells and prevents induction of anergy in T-cell clones.](#)

Harding FA, McArthur JG, Gross JA, Raulet DH, Allison JP.

Nature 1992 Apr; 356(6370):607.

Application: Func, Mouse, Rat, L2 cells, Mouse T cells