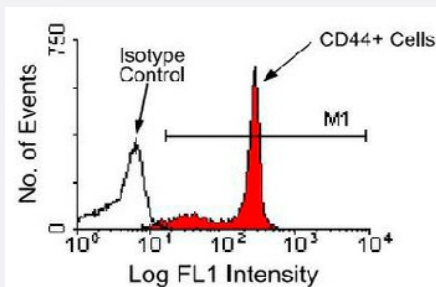


Cd44 monoclonal antibody, clone KM201

Catalog # MAB6204 Size 500 ug

Applications



Flow Cytometry

Cells from BALB/c bone marrow were stained with Cd44 monoclonal antibody, clone KM201 (FITC), following which large cells were gated and analyzed on a FACScan™ flow cytometer (BDIS, San Jose, CA).

Specification

Product Description	Rat monoclonal antibody raised against Cd44.
Immunogen	(C57 BL/6 x DBA/2)F1 mouse bone marrow derived stromal cells clone BM52.
Host	Rat
Reactivity	Mouse
Specificity	All isoforms of CD44/pgp-1 (Mr 80-95 KDa).
Form	Liquid
Isotype	IgG1
Recommend Usage	The optimal working dilution should be determined by the end user.
Storage Buffer	In 100 mM BBS, pH 8.2
Storage Instruction	Store at 4°C.

Applications

- Western Blot
- Immunoprecipitation
- Flow Cytometry

Cells from BALB/c bone marrow were stained with Cd44 monoclonal antibody, clone KM201 (FITC), following which large cells were gated and analyzed on a FACScan™ flow cytometer (BDIS, San Jose, CA).

Gene Info — Cd44

Entrez GeneID	12505
Gene Name	Cd44
Gene Alias	AU023126, AW121933, AW146109, HERMES, Ly-24, Pgp-1
Gene Description	CD44 antigen
Gene Ontology	Hyperlink
Other Designations	OTTMUSP00000015733 OTTMUSP00000015734 OTTMUSP00000015735

Publication Reference

- [The CD44 expressed on the earliest intrathymic precursor population functions as a thymus homing molecule but does not bind to hyaluronate.](#)

Wu L, Kincade PW, Shortman K.

Immunology Letters 1993 Sep; 38(1):69.

Application: Flow Cyt, Mouse, Thymocyte

- [Requirements for hyaluronic acid binding by CD44: a role for the cytoplasmic domain and activation by antibody.](#)

Lesley J, He Q, Miyake K, Hamann A, Hyman R, Kincade PW.

The Journal of Experimental Medicine 1992 Jan; 175(1):257.

Application: Flow Cyt, Func, Mouse, AKR1, BW5147, SAKRTLS, TEM-3H3 cells

- [Monoclonal antibodies to Pgp-1/CD44 block lympho-hemopoiesis in long-term bone marrow cultures.](#)

Miyake K, Medina KL, Hayashi S, Ono S, Hamaoka T, Kincade PW.

The Journal of Experimental Medicine 1990 Feb; 171(2):477.

Application: Flow Cyt, IA, IP, Mouse, BM-2 hybridoma cells, Mouse bone marrow, Mouse bone marrow cells, Mouse lymph node, Mouse spleen, Mouse Thymus