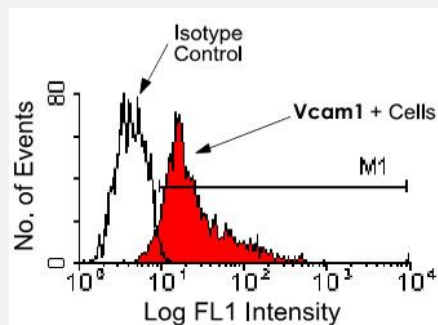


Vcam1 monoclonal antibody, clone M/K-2 (FITC)

Catalog # MAB6094 Size 500 ug

Applications



Flow Cytometry

BALB/c bone marrow cells were stained with Vcam1 monoclonal antibody, clone M/K-2 (FITC) (Cat # MAB6094), following which large cells were gated and analyzed by flow cytometry.

Specification

Product Description	Rat monoclonal antibody raised against Vcam1.
Immunogen	Balb/3T3, +/- 2.4 cells.
Host	Rat
Reactivity	Mouse
Specificity	Specificity CD106/VCAM-1 (~Mr 100-KDa)
Form	Liquid
Conjugation	FITC
Isotype	IgG1, kappa
Recommend Usage	Flow Cytometry (1 ug/10 ⁶ cells) The optimal working dilution should be determined by the end user.
Storage Buffer	In PBS (0.09% sodium azide)

Storage Instruction

Store in the dark at 4°C. Do not freeze.
Avoid prolonged exposure to light.
Aliquot to avoid repeated freezing and thawing.

Note

This product contains sodium azide: a POISONOUS AND HAZARDOUS SUBSTANCE which should be handled by trained staff only.

Applications

- Immunofluorescence
- Flow Cytometry

BALB/c bone marrow cells were stained with Vcam1 monoclonal antibody, clone M/K-2 (FITC) (Cat # MAB6094), following which large cells were gated and analyzed by flow cytometry.

Gene Info — Vcam1

Entrez GeneID[22329](#)**Gene Name**

Vcam1

Gene Alias

CD106, Vcam-1

Gene Description

vascular cell adhesion molecule 1

Gene Ontology[Hyperlink](#)**Other Designations**

-

Publication Reference

- [Inhibition of T cell costimulation by VCAM-1 prevents murine graft-versus-host disease across minor histocompatibility barriers.](#)

Schlegel PG, Vaysburd M, Chen Y, Butcher EC, Chao NJ.

Journal of Immunology 1995 Oct; 155(8):3856.

Application: Func, Mouse, Bone marrow cells, Lymphocytes, Spleen cells

- [A VCAM-like adhesion molecule on murine bone marrow stromal cells mediates binding of lymphocyte precursors in culture.](#)

Miyake K, Medina K, Ishihara K, Kimoto M, Auerbach R, Kincade PW.

The Journal of Cell Biology 1991 Aug; 114(3):557.

- [Evidence for a role of the integrin VLA-4 in lympho-hemopoiesis.](#)

Miyake K, Weissman IL, Greenberger JS, Kincade PW.

The Journal of Experimental Medicine 1991 Mar; 173(3):599.

Application: Flow Cyt, Mouse, 7OZ/3, B815, BM-2, WEHI231 cells