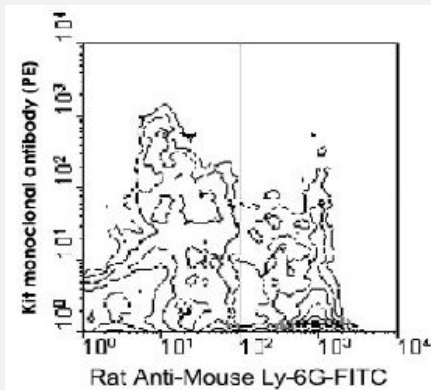


## Kit monoclonal antibody, clone 2B8 (APC/Cy5.5)

Catalog # MAB5966      Size 100 ug

### Applications



#### Flow Cytometry

BALB/c bone marrow cells were double-stained with Kit monoclonal antibody, clone 2B8 (PE) (Cat # MAB5962) and rat anti-mouse Ly-6G-FITC, following which total cells were analyzed by flow cytometry.

### Specification

<b>Product Description</b>	Rat monoclonal antibody raised against native Kit.
<b>Immunogen</b>	Native purified Kit from murine bone marrow mast cells.
<b>Host</b>	Rat
<b>Reactivity</b>	Mouse
<b>Specificity</b>	Specificity CD117/c-Kit
<b>Form</b>	Liquid
<b>Conjugation</b>	APC/Cy5.5
<b>Isotype</b>	IgG2b, kappa
<b>Recommend Usage</b>	Flow Cytometry (0.2 ug/10 <sup>6</sup> cells) The optimal working dilution should be determined by the end user.
<b>Storage Buffer</b>	In PBS (0.09% sodium azide)

**Storage Instruction**

Store in the dark at 4°C. Do not freeze.  
Avoid prolonged exposure to light.  
Aliquot to avoid repeated freezing and thawing.

**Note**

This product contains sodium azide: a POISONOUS AND HAZARDOUS SUBSTANCE which should be handled by trained staff only.

## Applications

- Flow Cytometry

BALB/c bone marrow cells were double-stained with Kit monoclonal antibody, clone 2B8 (PE) (Cat # MAB5962) and rat anti-mouse Ly-6G-FITC, following which total cells were analyzed by flow cytometry.

## Gene Info — Kit

**Entrez GeneID** [16590](#)

**Gene Name** Kit

**Gene Alias** Bs, CD117, Fdc, Gsfsc01, Gsfsc05, Gsfsc03, SCO1, SCO5, SOW3, Ssm, Tr-kit, W, c-KIT

**Gene Description** kit oncogene

**Gene Ontology** [Hyperlink](#)

**Other Designations** Dominant white spotting|Steel Factor Receptor|belly-spot|c-kit|c-kit proto-oncogene protein|dominant spotting|spotted sterile male

## Publication Reference

- [Interaction of stem cell factor and its receptor c-kit mediates lodgment and acute expansion of hematopoietic cells in the murine spleen.](#)

Broudy VC, Lin NL, Priestley GV, Nocka K, Wolf NS.  
Blood 1996 Jul; 88(1):75.

- [Distinct stages of melanocyte differentiation revealed by analysis of nonuniform pigmentation patterns.](#)

Yoshida H, Kunisada T, Kusakabe M, Nishikawa S, Nishikawa SI.  
Development 1996 Apr; 122(4):1207.

- [Functional hierarchy of c-kit and c-fms in intramarrow production of CFU-M.](#)

Sudo T, Nishikawa S, Ogawa M, Kataoka H, Ohno N, Izawa A, Hayashi S, Nishikawa S.

Oncogene 1995 Dec; 11(12):2469.