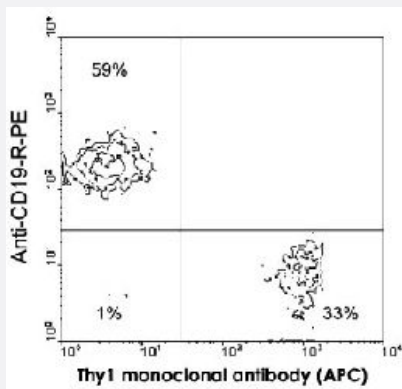


Thy1 monoclonal antibody, clone 30-H12 (SPRD)

Catalog # MAB5959 Size 100 ug

Applications



Flow Cytometry

BALB/c splenocytes were double-stained with Thy1 monoclonal antibody, clone 30-H12 (APC) (Cat # MAB5958) and Cd19 monoclonal antibody, clone 6D5 (PE) (Cat # MAB5689). Small lymphocytes were then gated and analyzed on a FACScan™ flow cytometer (BDIS, San Jose, CA).

Specification

Product Description	Rat monoclonal antibody raised against native Thy1.
Immunogen	Native purified Thy1 from mouse spleen cells or thymocyte membranes.
Host	Rat
Reactivity	Mouse
Specificity	Specificity Mouse CD90.2/Thy-1.2 alloantigen, Mr 18 KDa
Form	Liquid
Conjugation	SPRD
Isotype	IgG2b, kappa
Recommend Usage	Flow Cytometry (0.2 ug/10 ⁶ cells) The optimal working dilution should be determined by the end user.
Storage Buffer	In PBS (0.09% sodium azide)

Storage Instruction

Store in the dark at 4°C. Do not freeze.
Avoid prolonged exposure to light.
Aliquot to avoid repeated freezing and thawing.

Note

This product contains sodium azide: a POISONOUS AND HAZARDOUS SUBSTANCE which should be handled by trained staff only.

Applications

- Immunohistochemistry (Frozen sections)
- Flow Cytometry

BALB/c splenocytes were double-stained with Thy1 monoclonal antibody, clone 30-H12 (APC) (Cat # MAB5958) and Cd19 monoclonal antibody, clone 6D5 (PE) (Cat # MAB5689). Small lymphocytes were then gated and analyzed on a FACScan™ flow cytometer (BDIS, San Jose, CA).

Gene Info — Thy1

Entrez GeneID [21838](#)

Gene Name Thy1

Gene Alias CD90, T25, Thy-1, Thy-1.2, Thy1.1, Thy1.2

Gene Description thymus cell antigen 1, theta

Gene Ontology [Hyperlink](#)

Gene Summary O

Other Designations OTTMUSP00000018127|Thy 1.2

Publication Reference

- [Complete structure of the glycosyl phosphatidylinositol membrane anchor of rat brain Thy-1 glycoprotein.](#)

Homans SW, Ferguson MA, Dwek RA, Rademacher TW, Anand R, Williams AF.

Nature 1988 May; 333(6170):269.

- [Neuronal cell Thy-1 glycoprotein: homology with immunoglobulin.](#)

Williams AF, Gagnon J.

Science 1982 May; 216(4547):696.

- [T cell subsets defined by expression of Lyt-1,2,3 and Thy-1 antigens. Two-parameter immunofluorescence and cytotoxicity analysis with monoclonal antibodies modifies current views.](#)

Ledbetter JA, Rouse RV, Micklem HS, Herzenberg LA.

The Journal of Experimental Medicine 1980 Aug; 152(2):280.

Application: IF, IHC-Fr, Flow Cyt, Mouse, Mouse T cells, Mouse lymph node