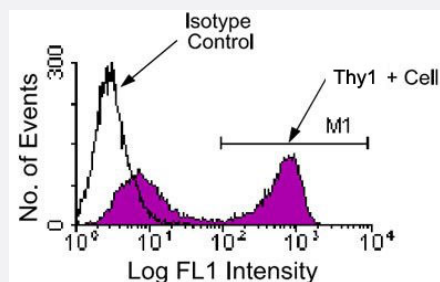


Thy1 monoclonal antibody, clone G7 (APC)

Catalog # MAB5956 Size 100 ug

Applications



Flow Cytometry

BALB/c mesenteric lymph node cells were stained with either rat IgG2c-FITC (as a negative control) or Thy1 monoclonal antibody, clone G7 (FITC) (Cat # MAB5953). Lymphocytes were then gated and analyzed on a FACScan™ flow cytometer (BDIS, San Jose, CA).

Specification

Product Description	Rat monoclonal antibody raised against Thy1.
Immunogen	MST cell hybridoma C6/G8.
Host	Rat
Reactivity	Mouse
Specificity	Specificity Thy-1.1 and Thy-1.2 alloantigens (Thy-1 epitope region A)
Form	Liquid
Conjugation	APC
Isotype	IgG2c, kappa
Recommend Usage	Flow Cytometry (0.2 ug/10 ⁶ cells) The optimal working dilution should be determined by the end user.
Storage Buffer	In PBS (0.09% sodium azide)

Storage Instruction

Store in the dark at 4°C. Do not freeze.
Avoid prolonged exposure to light.
Aliquot to avoid repeated freezing and thawing.

Note

This product contains sodium azide: a POISONOUS AND HAZARDOUS SUBSTANCE which should be handled by trained staff only.

Applications

- Immunocytochemistry
- Flow Cytometry

BALB/c mesenteric lymph node cells were stained with either rat IgG2c-FITC (as a negative control) or Thy1 monoclonal antibody, clone G7 (FITC) (Cat # MAB5953). Lymphocytes were then gated and analyzed on a FACScan™ flow cytometer (BDIS, San Jose, CA).

Gene Info — Thy1

Entrez GeneID	21838
Gene Name	Thy1
Gene Alias	CD90, T25, Thy-1, Thy-1.2, Thy1.1, Thy1.2
Gene Description	thymus cell antigen 1, theta
Gene Ontology	Hyperlink
Gene Summary	O
Other Designations	OTTMUSP00000018127 Thy 1.2

Publication Reference

- [Thy-1 triggers mouse thymocyte apoptosis through a bcl-2-resistant mechanism.](#)

Hueber AO, Raposo G, Pierres M, He HT.

The Journal of Experimental Medicine 1994 Mar; 179(3):785.

- [Activation-driven T cell death. II. Quantitative differences alone distinguish stimuli triggering nontransformed T cell proliferation or death.](#)

Ucker DS, Meyers J, Obermiller PS.

Journal of Immunology 1992 Sep; 149(5):1583.

- [Thy-1 supports adhesion of mouse thymocytes to thymic epithelial cells through a Ca²⁺\(+\)-independent mechanism.](#)

He HT, Naquet P, Caillol D, Pierres M.

The Journal of Experimental Medicine 1991 Feb; 173(2):515.