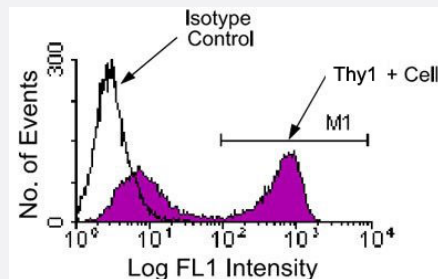


# Thy1 monoclonal antibody, clone G7 (Biotin)

Catalog # MAB5954      Size 500 ug

## Applications



### Flow Cytometry

BALB/c mesenteric lymph node cells were stained with either rat IgG2c-FITC (as a negative control) or Thy1 monoclonal antibody, clone G7 (FITC) (Cat # MAB5953). Lymphocytes were then gated and analyzed on a FACScan™ flow cytometer (BDIS, San Jose, CA).

## Specification

<b>Product Description</b>	Rat monoclonal antibody raised against Thy1.
<b>Immunogen</b>	MST cell hybridoma C6/G8.
<b>Host</b>	Rat
<b>Reactivity</b>	Mouse
<b>Specificity</b>	Specificity Thy-1.1 and Thy-1.2 alloantigens (Thy-1 epitope region A)
<b>Form</b>	Liquid
<b>Conjugation</b>	Biotin
<b>Isotype</b>	IgG2c, kappa
<b>Recommend Usage</b>	Flow Cytometry (1 ug/10 <sup>6</sup> cells) The optimal working dilution should be determined by the end user.
<b>Storage Buffer</b>	In PBS (0.09% sodium azide)

**Storage Instruction**

Store in the dark at 4°C. Do not freeze.  
Avoid prolonged exposure to light.  
Aliquot to avoid repeated freezing and thawing.

**Note**

This product contains sodium azide: a POISONOUS AND HAZARDOUS SUBSTANCE which should be handled by trained staff only.

## Applications

- Immunocytochemistry
- Flow Cytometry

BALB/c mesenteric lymph node cells were stained with either rat IgG2c-FITC (as a negative control) or Thy1 monoclonal antibody, clone G7 (FITC) (Cat # MAB5953). Lymphocytes were then gated and analyzed on a FACScan™ flow cytometer (BDIS, San Jose, CA).

## Gene Info — Thy1

**Entrez GeneID**[21838](#)**Gene Name**

Thy1

**Gene Alias**

CD90, T25, Thy-1, Thy-1.2, Thy1.1, Thy1.2

**Gene Description**

thymus cell antigen 1, theta

**Gene Ontology**[Hyperlink](#)**Gene Summary**

O

**Other Designations**

OTTMUSP00000018127|Thy 1.2

## Publication Reference

- [Thy-1 triggers mouse thymocyte apoptosis through a bcl-2-resistant mechanism.](#)

Hueber AO, Raposo G, Pierres M, He HT.

The Journal of Experimental Medicine 1994 Mar; 179(3):785.

- [Activation-driven T cell death. II. Quantitative differences alone distinguish stimuli triggering nontransformed T cell proliferation or death.](#)

Ucker DS, Meyers J, Obermiller PS.

Journal of Immunology 1992 Sep; 149(5):1583.

- [Thy-1 supports adhesion of mouse thymocytes to thymic epithelial cells through a Ca<sup>2</sup>\(+\)-independent mechanism.](#)

He HT, Naquet P, Caillol D, Pierres M.

The Journal of Experimental Medicine 1991 Feb; 173(2):515.