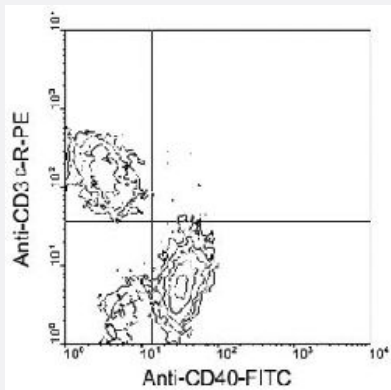


Cd40 monoclonal antibody, clone 1C10 (SPRD)

Catalog # MAB5935 Size 100 ug

Applications



Flow Cytometry

Cells from BALB/c spleen were stained with Cd40 monoclonal antibody, clone 1C10 (FITC) (Cat # MAB5931) and Cd3e monoclonal antibody, clone 145-2C11 (PE) (Cat # MAB5909), gated on small lymphocytes and analyzed on a FACScan™ flow cytometer (BDIS, San Jose, CA).

Specification

Product Description Rat monoclonal antibody raised against partial Cd40.

Immunogen Extracellular domain of mouse Cd40.

Host Rat

Reactivity Mouse

Specificity Specificity Mouse CD40, Mr 45-50 KDa

Form Liquid

Conjugation SPRD

Isotype IgG2a, kappa

Recommend Usage Flow Cytometry (0.5 ug/10⁶ cells)
The optimal working dilution should be determined by the end user.

Storage Buffer In PBS (0.09% sodium azide)

Storage Instruction

Store in the dark at 4°C. Do not freeze.
Avoid prolonged exposure to light.
Aliquot to avoid repeated freezing and thawing.

Note

This product contains sodium azide: a POISONOUS AND HAZARDOUS SUBSTANCE which should be handled by trained staff only.

Applications

- Immunoprecipitation
- Flow Cytometry

Cells from BALB/c spleen were stained with Cd40 monoclonal antibody, clone 1C10 (FITC) (Cat # MAB5931) and Cd3e monoclonal antibody, clone 145-2C11 (PE) (Cat # MAB5909), gated on small lymphocytes and analyzed on a FACScan™ flow cytometer (BDIS, San Jose, CA).

Gene Info — Cd40

Entrez GeneID	21939
Gene Name	Cd40
Gene Alias	AI326936, Bp50, GP39, HIGM1, IGM, IMD3, T-BAM, TRAP, Tnfrsf5, p50
Gene Description	CD40 antigen
Gene Ontology	Hyperlink
Gene Summary	member 5
Other Designations	OTTMUSP00000017667 OTTMUSP00000017739 T-cell differentiation antigen tumor necrosis factor receptor superfamily, member 5

Publication Reference

- [Monoclonal antibodies to murine CD40 define two distinct functional epitopes.](#)

Heath AW, Wu WW, Howard MC.

European Journal of Immunology 1994 Aug; 24(8):1828.

Application: Flow Cyt, Mouse, Mouse B cells, L cells

- [Properties of mouse CD40: cellular distribution of CD40 and B cell activation by monoclonal anti-mouse CD40 antibodies.](#)

Hasbold J, Johnson-Leger C, Atkins CJ, Clark EA, Klaus GG.

European Journal of Immunology 1994 Aug; 24(8):1835.

Application: Flow Cyt, Mouse, BHK cells

- [Antibodies to murine CD40 protect normal and malignant B cells from induced growth arrest.](#)

Santos-Argumedo L, Gordon J, Heath AW, Howard M.

Cell 1994 Jul; 156(2):272.