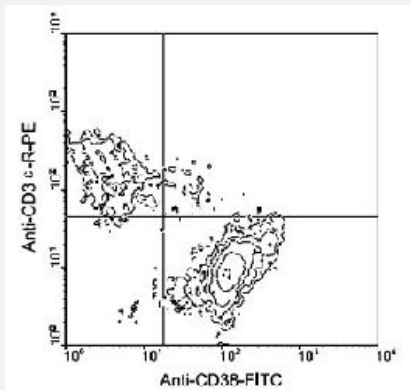


Cd38 monoclonal antibody, clone 90 (Biotin)

Catalog # MAB5927 Size 500 ug

Applications



Flow Cytometry

Cells from BALB/c spleen were double-stained with Cd38 monoclonal antibody, clone 90 (FITC) (Cat # MAB5926) and Cd3e monoclonal antibody, clone 145-2C11 (PE) (Cat # MAB5909). Small lymphocytes were gated and analyzed on a FACScan flow cytometer (BDIS, San Jose, CA).

Specification

Product Description	Rat monoclonal antibody raised against native Cd38.
Immunogen	Native purified Cd38 from mouse bone marrow pre-B cells.
Host	Rat
Reactivity	Mouse
Specificity	Specificity CD38 (Mr 42-KDa), an immunoregulatory ectoenzyme
Form	Liquid
Conjugation	Biotin
Isotype	IgG2a, kappa
Recommend Usage	Flow Cytometry (1 ug/10 ⁶ cells) The optimal working dilution should be determined by the end user.
Storage Buffer	In PBS (0.09% sodium azide)

Storage Instruction

Store in the dark at 4°C. Do not freeze.
Avoid prolonged exposure to light.
Aliquot to avoid repeated freezing and thawing.

Note

This product contains sodium azide: a POISONOUS AND HAZARDOUS SUBSTANCE which should be handled by trained staff only.

Applications

- Immunohistochemistry (Frozen sections)
- Immunoprecipitation
- Flow Cytometry

Cells from BALB/c spleen were double-stained with Cd38 monoclonal antibody, clone 90 (FITC) (Cat # MAB5926) and Cd3e monoclonal antibody, clone 145-2C11 (PE) (Cat # MAB5909). Small lymphocytes were gated and analyzed on a FACScan flow cytometer (BDIS, San Jose, CA).

Gene Info — Cd38

Entrez GeneID [12494](#)

Gene Name Cd38

Gene Alias Cd38-rs1

Gene Description CD38 antigen

Gene Ontology [Hyperlink](#)

Other Designations -

Publication Reference

- [Formation and hydrolysis of cyclic ADP-ribose catalyzed by lymphocyte antigen CD38.](#)

Howard M, Grimaldi JC, Bazan JF, Lund FE, Santos-Argumedo L, Parkhouse RM, Walseth TF, Lee HC.
Science 1993 Nov; 262(5136):1056.

- [Expression cloning of a cDNA encoding a novel murine B cell activation marker. Homology to human CD38.](#)

Harada N, Santos-Argumedo L, Chang R, Grimaldi JC, Lund FE, Brannan CI, Copeland NG, Jenkins NA, Heath AW, Parkhouse RM, et al..

Journal of Immunology 1993 Sep; 151(6):3111.

Application: Flow Cyt, Monkey, COS-7 cells

- [A B lymphocyte surface molecule mediating activation and protection from apoptosis via calcium channels.](#)

Santos-Argumedo L, Teixeira C, Preece G, Kirkham PA, Parkhouse RM.

Journal of Immunology 1993 Sep; 151(6):3119.