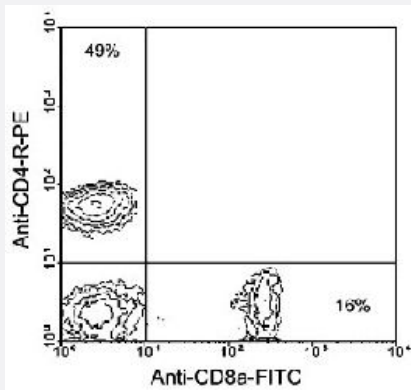


Cd4 monoclonal antibody, clone GK1.5 (APC/Cy5.5)

Catalog # MAB5925 Size 100 ug

Applications



Flow Cytometry

Cells from BALB/c mesenteric lymph nodes were double-stained with Cd4 monoclonal antibody, clone GK1.5 (FITC) (Cat # MAB5918), gated on small lymphocytes and analyzed by flow cytometry.

Specification

Product Description Rat monoclonal antibody raised against Cd4.

Immunogen Cloned mouse CTL line V41.

Host Rat

Reactivity Mouse

Specificity CD4/L3T4a, Mr 52 KDa.

Form Liquid

Conjugation APC/Cy5.5

Isotype IgG2b, kappa

Recommend Usage Flow Cytometry (0.2 ug/10⁶ cells)
The optimal working dilution should be determined by the end user.

Storage Buffer In PBS (0.09% sodium azide)

Storage Instruction

Store in the dark at 4°C. Do not freeze.
Avoid prolonged exposure to light.
Aliquot to avoid repeated freezing and thawing.

Note

This product contains sodium azide: a POISONOUS AND HAZARDOUS SUBSTANCE which should be handled by trained staff only.

Applications

- Immunohistochemistry (Frozen sections)
- Immunoprecipitation
- Flow Cytometry

Cells from BALB/c mesenteric lymph nodes were double-stained with Cd4 monoclonal antibody, clone GK1.5 (FITC) (Cat # MAB5918), gated on small lymphocytes and analyzed by flow cytometry.

Gene Info — Cd4

Entrez GeneID	12504
Gene Name	Cd4
Gene Alias	L3T4, Ly-4
Gene Description	CD4 antigen
Gene Ontology	Hyperlink
Other Designations	OTTMUSP00000027399 T-cell surface glycoprotein CD4 precursor (T-cell surface antigen T4/Leu-3) (T-cell differentiation antigen L3T4)

Publication Reference

- [Repertoire development and ligand specificity of murine TCR gamma delta cells.](#)

Bluestone JA, Cron RQ, Barrett TA, Houlden B, Sperling AI, Dent A, Hedrick S, Rellahan B, Matis LA.

Immunological Reviews 1991 Apr; 120:5.

- [CD4 expressed on earliest T-lineage precursor cells in the adult murine thymus.](#)

Wu L, Scollay R, Egerton M, Pearse M, Spangrude GJ, Shortman K.

Nature 1991 Jan; 349(6304):71.

- [Role of L3T4 and Ia in the heteroclitic response of T cells to cytochrome c.](#)

Lahey EK, Margoliash E, Fitch FW, Pierce SK.

Journal of Immunology 1986 Jun; 136(11):3933.