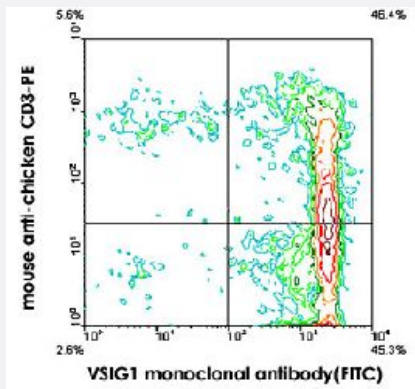


VSIG1 monoclonal antibody, clone CT1 (FITC)

Catalog # MAB5856 Size 500 ug

Applications



Flow Cytometry

Chicken thymocytes were double stained with mouse anti-chicken CD3-PE and VSIG1 monoclonal antibody, clone CT1 (FITC) (Cat # MAB5856). Analysis was performed on a FACScan™ flow cytometer (BDB, San Jose, CA) using a light scatter gate to identify small lymphocytes.

Specification

Product Description	Mouse monoclonal antibody raised against native VSIG1.
Immunogen	Native purified from chicken thymocytes.
Host	Mouse
Reactivity	Chicken
Specificity	ChT1 antigen (Mr 63/104 KDa) on chicken thymocytes.
Form	Liquid
Conjugation	FITC
Isotype	IgG1, kappa
Recommend Usage	Flow Cytometry (1 ug/10 ⁶ cells) The optimal working dilution should be determined by the end user.
Storage Buffer	In PBS (0.09% sodium azide)

Storage Instruction

Store in the dark at 4°C. Do not freeze.
Avoid prolonged exposure to light.
Aliquot to avoid repeated freezing and thawing.

Note

This product contains sodium azide: a POISONOUS AND HAZARDOUS SUBSTANCE which should be handled by trained staff only.

Applications

- Immunoprecipitation
- Flow Cytometry

Chicken thymocytes were double stained with mouse anti-chicken CD3-PE and VSIG1 monoclonal antibody, clone CT1 (FITC) (Cat # MAB5856). Analysis was performed on a FACScan™ flow cytometer (BDB, San Jose, CA) using a light scatter gate to identify small lymphocytes.

Gene Info — VSIG1

Entrez GeneID [414795](#)

Gene Name VSIG1

Gene Alias CHT1

Gene Description V-set and immunoglobulin domain containing 1

Gene Ontology [Hyperlink](#)

Other Designations ChT1 thymocyte antigen

Publication Reference

- [ChT1, an Ig superfamily molecule required for T cell differentiation.](#)

Katevuo K, Imhof BA, Boyd R, Chidgey A, Bean A, Dunon D, Gobel TW, Vainio O.
Journal of Immunology 1999 May; 162(10):5685.

Application: Flow Cyt, Chicken, Cells from chickens' bone marrow, spleen, thymus, PBL

- [Thymic function can be accurately monitored by the level of recent T cell emigrants in the circulation.](#)

Kong F, Chen CH, Cooper MD.
Immunity 1998 Jan; 8(1):97.

- [Tissue distribution and ontogenic appearance of a chicken T lymphocyte differentiation marker.](#)

Houssaint E, Diez E, Jotereau FV.

European Journal of Immunology 1985 Mar; 15(3):305.