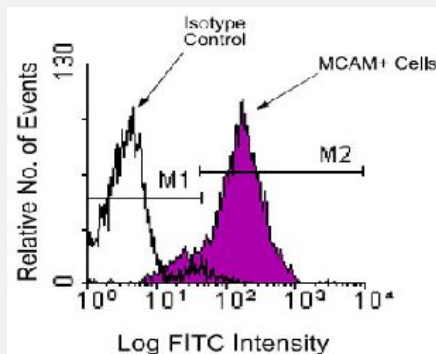


MCAM monoclonal antibody, clone C264 (Biotin)

Catalog # MAB5851 Size 500 ug

Applications



Flow Cytometry

Thymocytes from a young chicken were isolated and incubated with MCAM monoclonal antibody, clone C264. The cells were then stained with goat anti-mouse IgG2b-FITC and analyzed on a FACScan™ flow cytometer (BDB, San Jose, CA).

Specification

Product Description	Mouse monoclonal antibody raised against native MCAM.
Immunogen	Native purified chicken MCAM.
Host	Mouse
Reactivity	Chicken
Specificity	Chicken MCAM, Mr 98 KDa (protein core =84 KDa).
Form	Liquid
Conjugation	Biotin
Isotype	IgG2b, kappa
Recommend Usage	Flow Cytometry (1 ug/10 ⁶ cells) The optimal working dilution should be determined by the end user.
Storage Buffer	In PBS (0.09% sodium azide)

Storage Instruction

Store in the dark at 4°C. Do not freeze.
Avoid prolonged exposure to light.
Aliquot to avoid repeated freezing and thawing.

Note

This product contains sodium azide: a POISONOUS AND HAZARDOUS SUBSTANCE which should be handled by trained staff only.

Applications

- Immunohistochemistry (Frozen sections)
- Immunoprecipitation
- Flow Cytometry

Thymocytes from a young chicken were isolated and incubated with MCAM monoclonal antibody, clone C264. The cells were then stained with goat anti-mouse IgG2b-FITC and analyzed on a FACScan™ flow cytometer (BDB, San Jose, CA).

Gene Info — MCAM

Entrez GeneID	448832
Gene Name	MCAM
Gene Alias	-
Gene Description	melanoma cell adhesion molecule
Gene Ontology	Hyperlink
Other Designations	HEMCAM gicerin

Publication Reference

- [HEMCAM, an adhesion molecule expressed by c-kit+ hemopoietic progenitors.](#)

Vainio O, Dunon D, Aissi F, Dangy JP, McNagny KM, Imhof BA.

The Journal of Cell Biology 1996 Dec; 135(6 Pt 1):1655.

Application: Flow Cyt, IHC-Fr, Chicken, E13.5 H.B19 bone marrow, embryonic tissues, spleen, thymus cells