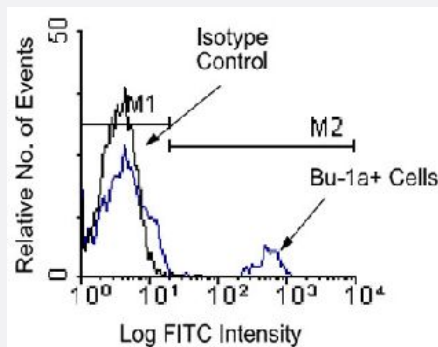


# Bu-1a monoclonal antibody, clone 21-1A4 (FITC)

Catalog # MAB5842      Size 500 ug

## Applications



### Flow Cytometry

Chicken peripheral blood mononuclear cells were first incubated with Bu-1a monoclonal antibody, clone 21-1A4 and then counter-stained with goat anti-mouse IgG-FITC. Small lymphocytes were gated using light scatter criteria and analyzed on a FACScan™ flow cytometer (BDB, San Jose, CA).

## Specification

<b>Product Description</b>	Mouse monoclonal antibody raised against native Bu-1a.
<b>Immunogen</b>	Native purified from Bursal cells of one-day-old H.B15 (Bu-1 a/b) strain chickens.
<b>Host</b>	Mouse
<b>Reactivity</b>	Chicken
<b>Specificity</b>	Chicken Bu-1a alloantigen, Mr 70 KDa.
<b>Form</b>	Liquid
<b>Conjugation</b>	FITC
<b>Isotype</b>	IgG1, kappa
<b>Recommend Usage</b>	Flow Cytometry (1 ug/10 <sup>6</sup> cells) The optimal working dilution should be determined by the end user.
<b>Storage Buffer</b>	In PBS (0.09% sodium azide)

**Storage Instruction**

Store in the dark at 4°C. Do not freeze.  
Avoid prolonged exposure to light.  
Aliquot to avoid repeated freezing and thawing.

**Note**

This product contains sodium azide: a POISONOUS AND HAZARDOUS SUBSTANCE which should be handled by trained staff only.

## Applications

- Immunohistochemistry (Frozen sections)
- Immunoprecipitation
- Flow Cytometry

Chicken peripheral blood mononuclear cells were first incubated with Bu-1a monoclonal antibody, clone 21-1A4 and then counter-stained with goat anti-mouse IgG-FITC. Small lymphocytes were gated using light scatter criteria and analyzed on a FACScan™ flow cytometer (BDB, San Jose, CA).

## Publication Reference

- [Monoclonal antibodies against chicken Bu-1a and Bu-1b alloantigens.](#)

Veromaa T, Vainio O, Eerola E, Toivanen P.

Hybridoma 1988 Feb; 7(1):41.

Application: Flow Cyt, Func, Chicken, Bursa cells, peripheral blood leukocytes