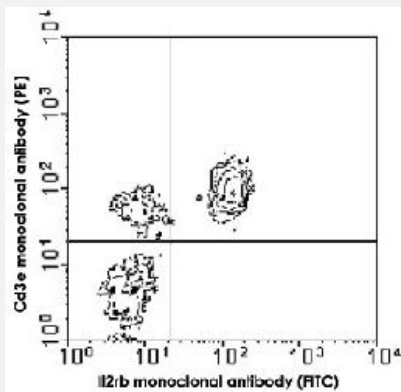


IL2rb monoclonal antibody, clone 5H4 (FITC)

Catalog # MAB5807 Size 500 ug

Applications



Flow Cytometry

BALB/c lymph node cells were double stained with Cd3e monoclonal antibody, clone C363.29B (PE) (Cat # MAB6102) and IL2rb monoclonal antibody, clone 5H4 (FITC) (Cat # MAB5807). Small lymphocytes were gated and analyzed on a FACScan™ flow cytometer (BDIS, San Jose, CA).

Specification

Product Description	Rat monoclonal antibody raised against IL2rb.
Immunogen	Rat myeloma YB2/0 transfected with truncated mouse IL-2RB cDNA.
Host	Rat
Reactivity	Mouse
Specificity	beta chain (Mr 90-100 KDa) of the IL-2 receptor.
Form	Liquid
Conjugation	FITC
Isotype	IgG2a, kappa
Recommend Usage	Flow Cytometry (1 ug/10 ⁶ cells) The optimal working dilution should be determined by the end user.
Storage Buffer	In PBS (0.09% sodium azide)

Storage Instruction

Store in the dark at 4°C. Do not freeze.
Avoid prolonged exposure to light.
Aliquot to avoid repeated freezing and thawing.

Note

This product contains sodium azide: a POISONOUS AND HAZARDOUS SUBSTANCE which should be handled by trained staff only.

Applications

- Immunoprecipitation
- Flow Cytometry

BALB/c lymph node cells were double stained with Cd3e monoclonal antibody, clone C363.29B (PE) (Cat # MAB6102) and Il2rb monoclonal antibody, clone 5H4 (FITC) (Cat # MAB5807). Small lymphocytes were gated and analyzed on a FACScan™ flow cytometer (BDIS, San Jose, CA).

Gene Info — Il2rb

Entrez GeneID[16185](#)**Gene Name**

Il2rb

Gene Alias

CD122, IL-15Rbeta, IL15Rbeta, IL-2/15Rbeta, IL-2Rbeta, MGC118674, p70

Gene Description

interleukin 2 receptor, beta chain

Gene Ontology[Hyperlink](#)**Gene Summary**

O

Other Designations

IL-15 receptor beta chain|IL-2 receptor beta chain|IL-2/15 receptor-beta

Publication Reference

- [Biochemical identity and characterization of the mouse interleukin-2 receptor beta and gamma c subunits.](#)

Malek TR, Furse RK, Fleming ML, Fadell AJ, He YW.

Journal of Interferon & Cytokine Research: the Official Journal of the International Society for Int 1995 May; 15(5):447.

Application: Flow Cyt, Mouse , Mouse EL4 cells

- [The IL-2 receptor complex: its structure, function, and target genes.](#)

Minami Y, Kono T, Miyazaki T, Taniguchi T.

Annual Review of Immunology 1993 Apr; 11:245.

- [A novel monoclonal antibody against murine IL-2 receptor beta-chain. Characterization of receptor expression in normal lymphoid cells and EL-4 cells.](#)

Tanaka T, Tsudo M, Karasuyama H, Kitamura F, Kono T, Hatakeyama M, Taniguchi T, Miyasaka M.

Journal of Immunology 1991 Oct; 147(7):2222.

Application: Flow Cyt, Mouse, Mouse spleen cells