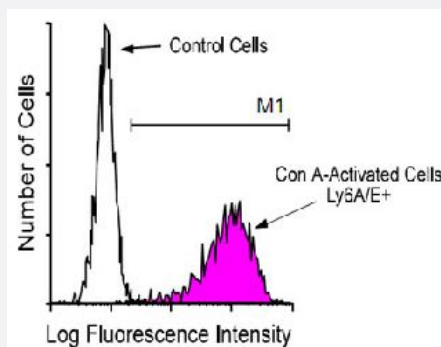


Ly6a monoclonal antibody, clone D7 (FITC)

Catalog # MAB5757 Size 500 ug

Applications



Flow Cytometry

BALB/c spleen cells were activated by incubation for 48 hours with concanavalin-A. After harvesting, the cells were stained with Ly6a monoclonal antibody, clone D7 (FITC) (Cat # MAB5757), and activated cells were gated and analyzed on a FACScan™ flow cytometer.

Specification

Product Description	Rat monoclonal antibody raised against native Ly6a.
Immunogen	Native purified Ly6a from IL-2-dependent mouse T-cell line CTL-L.
Host	Rat
Reactivity	Mouse
Specificity	Ly-6A.2 and Ly-6E.1, allelic members of the Ly-6 multigene family; Mr 18 KDa.
Form	Liquid
Conjugation	FITC
Isotype	IgG2a, kappa
Recommend Usage	Flow Cytometry (1 ug/10 ⁶ cells) The optimal working dilution should be determined by the end user.
Storage Buffer	In PBS (0.09% sodium azide)

Storage Instruction

Store in the dark at 4°C. Do not freeze.
Avoid prolonged exposure to light.
Aliquot to avoid repeated freezing and thawing.

Note

This product contains sodium azide: a POISONOUS AND HAZARDOUS SUBSTANCE which should be handled by trained staff only.

Applications

- Western Blot
- Immunoprecipitation
- Flow Cytometry

BALB/c spleen cells were activated by incubation for 48 hours with concanavalin-A. After harvesting, the cells were stained with Ly6a monoclonal antibody, clone D7 (FITC) (Cat # MAB5757), and activated cells were gated and analyzed on a FACScan™ flow cytometer.

Gene Info — Ly6a

Entrez GeneID[110454](#)**Gene Name**

Ly6a

Gene Alias

Ly-6A.2, Ly-6A/E, Ly-6E.1, Sca-1, Sca1, TAP

Gene Description

lymphocyte antigen 6 complex, locus A

Gene Ontology[Hyperlink](#)**Gene Summary**

O

Other Designations

-

Publication Reference

- [In vitro expansion of hematopoietic progenitors and maintenance of stem cells: comparison between FLT3/FLK-2 ligand and KIT ligand.](#)

Yonemura Y, Ku H, Lyman SD, Ogawa M.

Blood 1997 Mar; 89(6):1915.

Application: Flow Cyt, Mouse, Mouse bone marrow cells

- [In vitro differentiation of murine Sca-1+Lin- cells into myeloid, B cell and T cell lineages.](#)

Ito M, Anan K, Misawa M, Kai S, Hara H.

Stem Cells 1996 Jul; 14(4):412.

Application: Flow Cyt, Mouse, Mouse bone marrow cells

- [Transplantable NK cell progenitors in murine bone marrow.](#)

Moore T, Bennett M, Kumar V.

Journal of Immunology 1995 Feb; 154(4):1653.